

# ***CLEETHORPES ACADEMY***

## ***HOME LEARNING***

Summer Term: 2

YEAR 9



We Are **CARING**

We Are **CURIOUS**

We Are **CREATIVE**

## Week 1

### English Language

#### AREDFOREST

**Anecdote** – A short story about a real incident/person. OR

**Alliteration** - The repetition of the same sound at the beginning of closely connected words.

**Rhetorical Question** – A question asked for effect which doesn't require an answer.

**Emotive Language** – The deliberate choice of words to create a strong emotional response in the reader.

**Direct Address** – Talking directly to the reader using terms like 'you' or 'we'.

**Facts** – Something that is proved to be true.

**Opinions** – A view or judgement formed about something, not necessarily based on facts or knowledge.

**Repetition** – The intentional, repeated use of language.

**Exaggeration** – A statement which represents something as better or worse than it really is.

**Statistics** – A fact which includes a piece of numerical data.

**Tripartite/Triplet/Rule of three** – A group, set, or series of three similar things.

## Week 1

### English Literature

#### Wilfred Owen

##### Who was he?

- Born in 1893 in England.
- Fought as a soldier in World War I.
- His poetry exposes the truth of war — the horror, fear, pain, and trauma.
- Killed in action in 1918, just one week before the Armistice.
- Now considered one of the greatest war poets.

##### Key Features of Owen's Poetry

###### 1. Graphic Reality of War

Owen shows war as it really was — muddy, terrifying, violent, and traumatic. He wanted to destroy the myth that war was glorious.

###### 2. Psychological Trauma

He explores:

- Shell shock
- Guilt
- Nightmares
- Survivor's guilt

His poems often show the mental scars soldiers carried.

###### 3. Sound and Rhythm

Owen uses:

- Alliteration
- Assonance
- Harsh consonant sounds to mimic gunfire, gas attacks, or panic.

# Week 1

## Mathematics

### Relative Frequency

Useful definitions:

Key Vocabulary	Definition
frequency	How many times a value appears (total amount)
Relative frequency	How often something happens divided by the total outcomes. Relative frequency always adds up to 1.
probability	How likely something is to happen. Can be shown as a fraction, decimal and/or percentage

Example:

Example: Your team has won 9 games from a total of 12 games played:

- the Frequency of winning is 9
- the Relative Frequency of winning is  $9/12 = 75\%$



Sam spins a fair 8-sided spinner.



Write down the probability that the spinner lands on A.

$$\frac{3}{8}$$

## Week 1

### Biology

Symptoms are the feelings or changes you experience in your body when you are ill. You can get symptoms when your body's cells or systems have been damaged or are not working normally.

Communicable diseases are caused by pathogens (bacteria, viruses, fungi and protists) which affect both animals and plants. These diseases can be transferred from one person to another.

Non-communicable disease is one that cannot be transferred from one person to another. Other diseases are caused by a person's:

lifestyle

their environment

their genes

This kind of disease is not caused by an infection. It is a non-communicable disease. You don't catch it

# Week 1

## Physics

### Energy Stores and Systems

Energy Stores	
kinetic	Moving objects have kinetic energy.
thermal	All objects have thermal energy.
chemical	Anything that can release energy during a chemical reaction.
elastic potential	Things that are stretched.
gravitational potential	Anything that is raised.
electrostatic	Charges that attract or repel.
magnetic	Magnets that attract or repel.
nuclear	The nucleus of an atom releases energy.

Energy can be transferred in the following ways:

mechanically – when work is done;

electrically – when moving charge does work;

heating – when energy is transferred from a hotter object to a colder object.

---

### Conservation of Energy

Energy can never be created or destroyed, just transferred from one form to another. Some energy is transferred usefully and some energy gets transferred into the environment. This is mostly wasted energy.

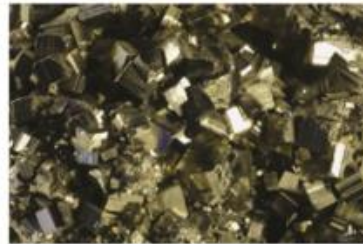
# Week 1

## Chemistry

### Proof of the early atmosphere.

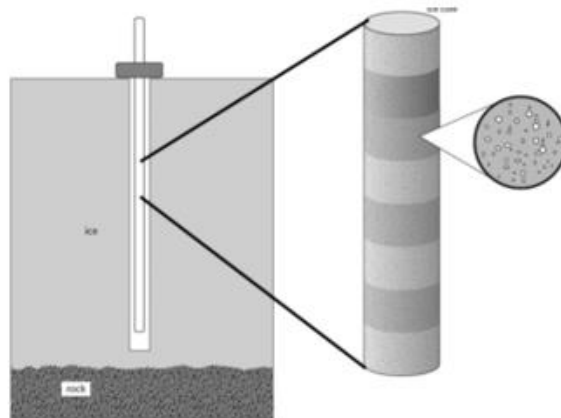
We have worked out the composition of early atmospheres by looking at rock layers, ice at the poles and by studying other planets.

- Iron pyrite is made up of iron sulphide, which only forms if there is *no* oxygen present.



- Red iron oxide rocks only form if there is oxygen present.

The iron pyrite is in earlier rock layers than iron oxide so we know the oxygen levels were not always at the level they are now.



Gases trapped in ice core samples can tell a story of our atmosphere over many years. The lower layers of ice are the oldest.

## Week 1

### Geography

*Read through the different opinions on climate change.*

Sir David Attenborough	<i>The stakes are very high. We know these changes are happening, the evidence is incontrovertible. If temperatures continue to rise, it could have a catastrophic effect on the human race. It is for scientists to declare what they see and then allow people to make up their minds.</i>
Greta Thunberg	<i>You have stolen my dreams and my childhood with your empty words ... For more than 30 years, the science has been crystal clear ... cutting our emissions in half in 10 years only gives us a 50% chance of staying below 1.5 degrees [Celsius] ... 50 % may be acceptable to you ... 50% risk is simply not acceptable to us – we who have to live with the consequences.</i>
William Gray	<i>I'm not disputing that there has been global warming. But this is natural, due to ocean circulation changes and other factors. It is not human induced.</i>
Ian Plimer	<i>Current changes in climate, sea level and ice are within variability. Climate has always been driven by the Sun, the Earth's orbit and the oceans, atmosphere and life respond. Humans have made their mark on the planet, thrived in warm times and struggled in cold times. The hypothesis that humans can actually change climate is unsupported by evidence from geology, archaeology, history and astronomy.</i>
SDG 13 Overview	<i>Climate change ... negatively impacts all SDGs and worsens most of humanity's most pressing challenges, such as poverty, hunger, drought, desertification, access to clean air, water energy and more.</i>

## Week 1

### History

Word	Definition
Capitalist	A nation's economy is capitalist if it is based on private ownership and profit. They believe in an individual's ability to gain wealth through intelligence and hard work
Democracy	Demos = people, kratia = power. People power. It is a government based on participation of the people
Communism	Economic theory favouring a classless society and the abolition of private property. Everyone shares all property in common, share the burden of labour and profits
Guerrilla warfare	Armed forces that fight by sabotage and harassment. No uniform attack when they retreat and attack at Camp
Protest	a) a formal declaration of objection b) the act of protesting; a public (often organized) manifestation of opposition
Domino theory	If one country falls to communism, others around it would fall
Empire	A group of countries under the control of one country
Climate	General weather in a particular region.

## Week 1









### Spanish

mi pasión es/son	my passion is
mi asignatura favorita es	my favourite subject is
soy malo en	I am bad at
soy malísimo en	I am really bad at
el arte	art
las matemáticas	maths
las ciencias	science
la informática	ICT
la religión	RE
el francés	French
el inglés	English
el alemán	German
el español	Spanish
las lenguas	foreign languages
la historia	history
el deporte	sport
el dibujo	drawing

# Week 1

## Personal Development

### Protected Characteristics

<b>Age</b>	People cannot be treated unfairly because they are young or old. Everyone deserves respect, no matter their age	 AGE
<b>Disability</b>	People with physical or mental disabilities must be treated fairly, with <b>reasonable adjustments</b> made to support them in school, work, and life.	 DISABILITY
<b>Gender Reassignment</b>	A person is considered to be <i>transitioning</i> if they change their gender through actions like changing their name, pronouns, appearance, or having medical treatment to match their identity.	 GENDER REASSIGNMENT
<b>Marriage and Civil Partnership</b>	People must be treated equally whether they are married, in a civil partnership, or single.	 MARRIAGE AND CIVIL PARTNERSHIP
<b>Pregnancy and Maternity</b>	Pregnant people and new parents must not be treated unfairly because they are having or have had a baby.	 PREGNANCY AND MATERNITY
<b>Race</b>	No one should be treated unfairly because of their skin colour, nationality, or <b>ethnicity</b> (a person's cultural identity, which may include shared language, traditions, and history).	 RACE
<b>Religion or Belief</b>	Everyone has the right to follow their religion or beliefs, or to have no religion, without discrimination.	 RELIGION OR BELIEF
<b>Sex</b>	People must not be treated unfairly because they are biologically male or female.	 SEX

Week 1

Music



Dynamics	How loud or soft the music is, and how it changes.
Rhythm	The pattern of long and short sounds; the beat of the music.
Structure	How the music is organised – for example, verse, chorus.
Melody	The main tune of the music. The part you can hum or sing.
Instrumentation	The types of instruments or voices used.
Texture	How many musical layers there are and how they fit together
Harmony	Different notes played or sung at the same time.



Week 2  
English Language

**Non-Fiction Text Types and their intended audiences**

**Diary Entry** – The author themselves.

**Blog post** – Likely a younger audience with a niche interest in a particular person or topic.

**Newspaper article** – Very broad readership – for broadsheet, likely to be on the older side.

**Travel leaflet** – Someone intending to journey to a particular destination.

**Autobiography** – A broad, public audience interested in a celebrity's life, historical events, or personal inspiration.

**Textbook** – Students or those with an interest in a specific academic topic.

## Week 2

### English Literature

#### William Wordsworth

##### Who was he?

- Born in 1770 in the Lake District, England.
- One of the founders of Romantic poetry.
- Believed poetry should focus on ordinary people, everyday life, and the natural world.
- Famous for writing in simple, clear language that expresses deep emotion.

##### Key Features of Wordsworth's Poetry

###### 1. Nature as a Teacher

Wordsworth believed nature could:

- Heal
- Inspire
- Teach moral lessons

He often describes landscapes with emotional or spiritual meaning.

###### 2. Childhood and Memory

He saw childhood as a time of:

- Innocence
- Imagination
- Joy

Many poems explore how childhood memories shape adult identity.

###### 3. Emotion and Reflection

His poems often show:

- Calm thinking
- Personal reflection
- Emotional honesty

## Week 2

### Mathematics

#### Independent and Dependant Events

Useful definitions:

Key Vocabulary	Definition	Examples
Independent event	Independent Events are <b>not affected</b> by previous events.	<p>Example: Tossing a coin.</p> <p>Each toss of a coin is a perfect isolated thing.</p> <p>What it did in the past will not affect the current toss.</p> <p>The chance is simply 1-in-2, or 50%, just like ANY toss of the coin.</p> <p>So each toss is an <b>Independent Event</b>.</p>
Dependant event	what happens <b>depends on</b> what happened before. Dependent events <b>can be affected</b> by previous events .	<p>Example: Marbles in a Bag</p> <p>2 blue and 3 red marbles are in a bag.</p> <p>What are the chances of getting a blue marble?</p> <p>The chance is <b>2 in 5</b></p>

		<p><b>But after taking one out the chances change!</b></p> <p>So the next time:</p> <p>if we got a <b>red</b> marble before, then the chance of a blue marble next is <b>2 in 4</b></p> <p>if we got a <b>blue</b> marble before, then the chance of a blue marble next is <b>1 in 4</b></p>
--	--	--

## Week 2

### Biology

Bacteria reproduce through 'binary fission'

They make copies of themselves every twenty minutes (exponential growth)

As they do this, they release toxins which make you feel unwell.

Viruses are not alive because they do not complete all of the seven life processes. We say 'strains' of virus and not species. Most are made of a relatively short length of the genetic material DNA which is surrounded by a protein coat.

Yeasts are single-celled fungi, so they are microbes. So is mould.

Fungi are usually bigger than bacteria.

If there is just one of them, we call it a fungus.

Protists are a group of microorganisms that have features that belong to animals, plants and fungi. Some are like animals, others more like plants and some, called moulds are closest to fungi.

They are all eukaryotic, which means they have a nucleus. Protists are single celled organisms made up of these sub-categories; protozoa, unicellular algae and slime molds.

# Week 2

## Physics

### Efficiency

Non-renewable – coal, oil, gas - they will all run out, they damage the environment, but provide most of the energy.

Renewable – they will never run out, can be unreliable and do not provide as much energy.

Energy Resource	Advantages	Disadvantages
solar – using sunlight	Renewable, no pollution, in sunny countries it is very reliable.	Lots of energy needed to build, only works during the day, cannot increase power if needed.
geothermal – using the energy of hot rocks	Renewable and reliable as the rocks are always hot. Power stations have a small impact on environment.	May release some greenhouse gases and only found in specific places.
wind – using turbines	Renewable, no pollution, no lasting damage to the environment, minimal running cost.	Not as reliable, do not work when there is no wind, cannot increase supply if needed.
hydroelectric – uses a dam	Renewable, no pollution, can increase supply if needed.	A big impact on the environment. Animals and plants may lose their habitats.
wave power – wave powered turbines	Renewable, no pollution.	Disturbs the seabed and habitats of animals. Unreliable.
tidal barrages – big dams across rivers	Renewable, very reliable, no pollution.	Changes the habitats of wildlife, fish can be killed in the turbines.
biofuels	Renewable, reliable, carbon neutral.	High costs, growing biofuels may cause a problem with regards to space, clearance of natural forests.
non-renewable – fossil fuels	Reliable, enough to meet current demand, can produce more energy when there is more demand.	Running out, release CO <sub>2</sub> , leading to global warming, and also release SO <sub>2</sub> which causes acid rain.

# Week 2

## Chemistry

### Peer Review and Journals

Scientists collaborate to share their ideas and to check each other's results and methods. One way scientists do this is by publishing their research in peer-reviewed journals. Your peer group is made up of other students of a similar age. In the scientific world, peers are other scientists.

All new research papers must be peer reviewed (evaluated by other scientists) to make sure that they are:

- **Valid**- do the results measure what they say they do, were the methods used (e.g., in data collection and analysis) appropriate, and was the research design correct?
- **Original**- are the results new? Has the work of other scientists been properly credited?
- **Significant** - are the research findings important?
- **Reproducible** – results from different people working independently are similar or the results have been able to be reproduced following the original method

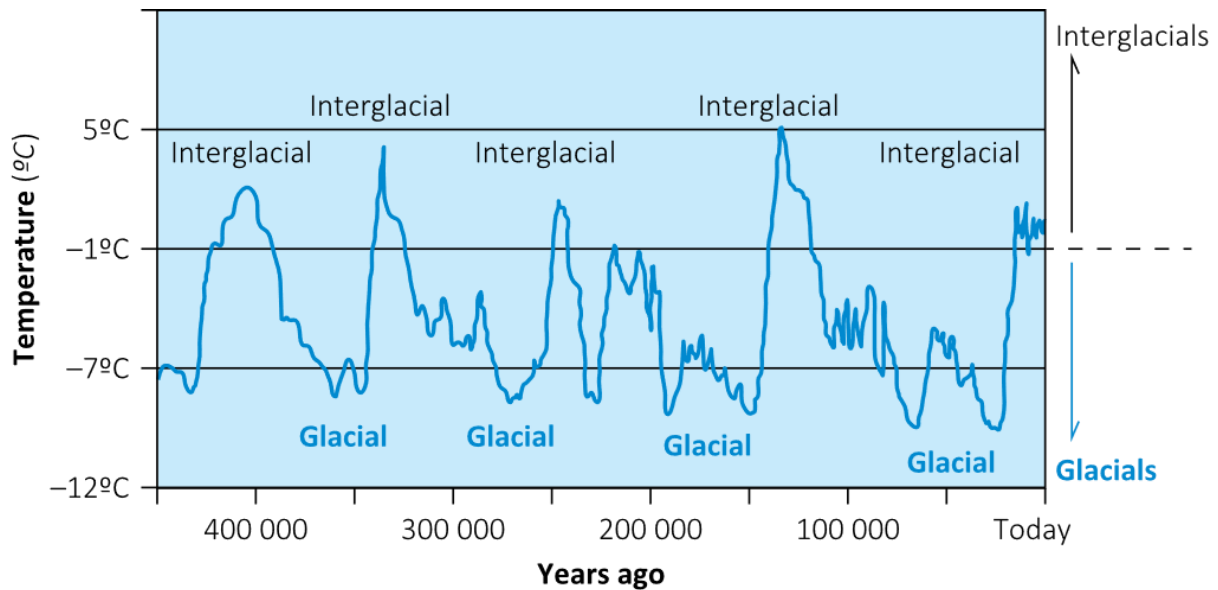
Once research has been published other scientists can read it, and either test it by trying to reproduce the research themselves or use it to inform and inspire further research.

If the new evidence contradicts the current most accepted theory this gives rise to very robust scientific debate.

## Week 2

### Geography

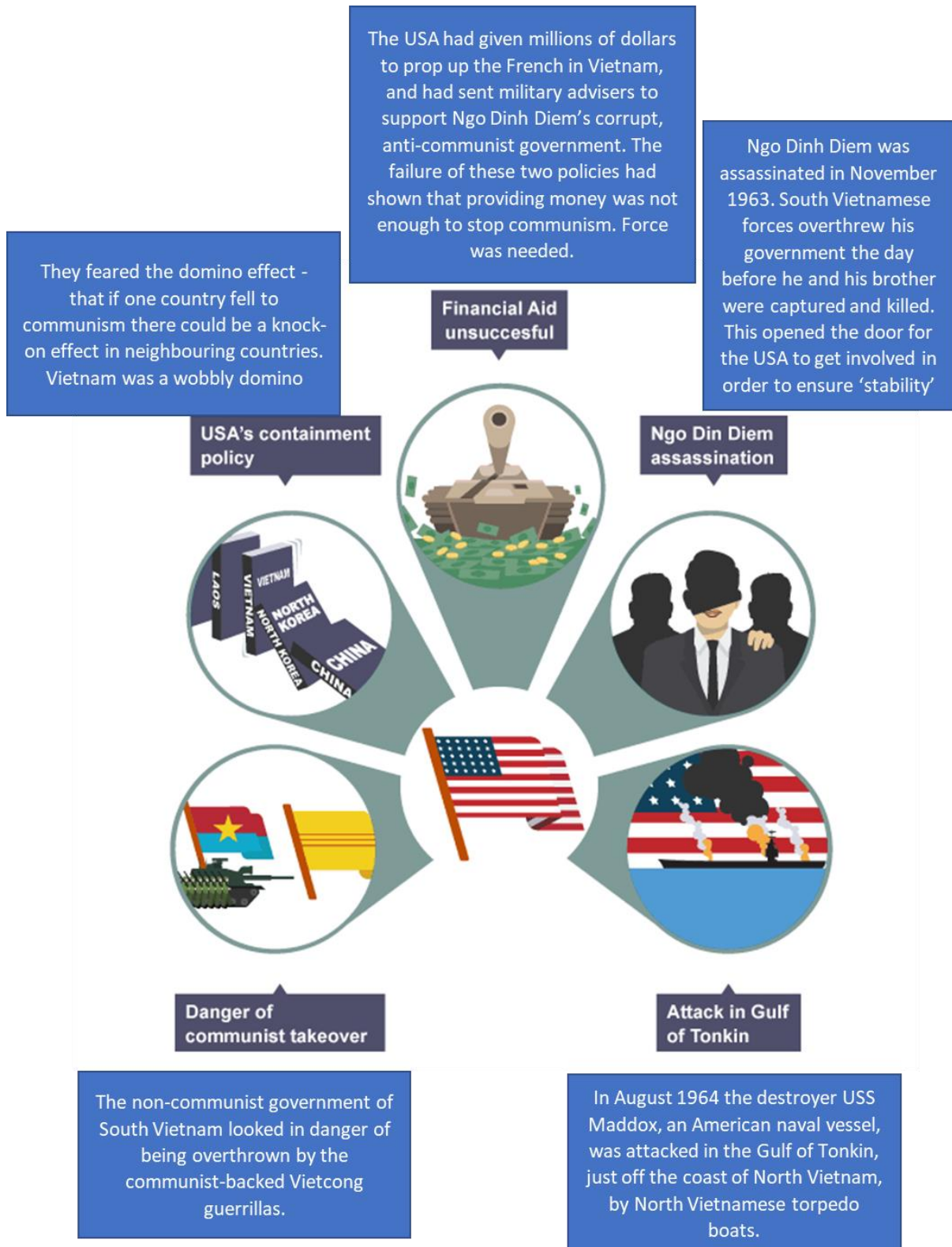
Read through the information and retrieve the key information on the next page.



**Greenhouse gases make up only about 1 per cent of the atmosphere. They act like a blanket around the Earth, or like the glass roof of a greenhouse – they trap heat and keep the planet warm. They let the Sun’s light shine onto the Earth’s surface, but they trap the heat that reflects back up into the atmosphere. This greenhouse effect keeps the Earth warm enough to sustain life. Scientists say that without the greenhouse effect, the average temperature of the Earth would drop from 15°C to as low as –18°C.**

# Week 2

## History



## Spanish


voy a estudiar	I am going to study
voy a dejar	I am going to drop
quiero mejorar mi nivel	I want to improve my level
quiero sacar buenas notas	I want to get good grades
quiero aprobar	I want to pass
voy a estudiar más	I am going to study more
voy a escuchar más	I am going to listen more
voy a aprender más	I am going to learn more
voy a repasar para los exámenes	I am going to revise for exams
voy a hacer los deberes	I am going to do hw
voy a preguntar más	I am going to ask questions
es bueno para mi educación	it is good for my education
es importante para mi educación	it is important for my education
es útil para mi futuro	it is useful for my future
es interesante	it is interesting

## Week 2

### Personal Development

#### British Values

Schools follow British values to promote fairness, respect, and equality. They help create a safe, inclusive environment where everyone can learn, grow, and feel valued, no matter their differences. The British Values are as follows:

<b>Democracy</b>	Everyone has the right to have a say and make decisions, by voting or expressing their opinion.	
<b>Rule of Law</b>	Laws exist to keep people safe and ensure fairness. It's important to follow the law and respect rules, both at school and in society.	
<b>Individual Liberty</b>	Everyone has the freedom to make their own choices, whether it's about their beliefs, where they live, or what they want to do in life.	
<b>Mutual Respect</b>	We must respect each other's opinions, beliefs, and differences. Treating others with kindness and fairness is key to building a strong community.	
<b>Tolerance of Others</b>	It's important to respect and understand people's different religions, cultures, and beliefs, even if they are not the same as ours.	

## Week 2

### Music

Folk music is traditional music that reflects the culture, history, and everyday life of a community or country. It is often passed down through generations by listening and performing rather than through written music. Folk songs commonly tell stories about love, work, travel, celebrations, or historical events.

Traditional folk music usually uses simple melodies and acoustic instruments such as guitars, fiddles, flutes, banjos, or drums.

Different countries have their own styles of folk music, including Irish folk, American folk, and English folk. Famous folk musicians include Bob Dylan and Joan Baez. Folk music remains important because it preserves cultural traditions and brings communities together.



## Week 3

### English Language

#### Conventions of letter writing

- **An address and date**
  - The address and date should always be at the top of your letter. This makes it easy for the person who receives your letter to know who it was from, when it was sent and how to get back in touch with you.
  - They should be laid out in this way:
  - Your full name should be on the first line.
  - Your full address, including postcode, should be underneath this (using separate lines for each new line of your address).
  - Your email address should then be immediately underneath this.
  - The date (writing the month and year in full) should immediately follow beneath this.
  - They should be in the top-right corner of the page, aligned to the right.
- **Paragraphs**
  - Must be clear and focused
  - Must have a logical structure
  - Must have appropriate discourse markers e.g. firstly, secondly, etc
- **A formal tone if necessary** – e.g. Dear Sir/Madam,
- **An appropriate signing off**, e.g. Yours sincerely, etc...
  - How you sign off will depend on how you started your letter.
  - If you used someone's name at the start, end with 'Yours sincerely,'
  - If you used 'Dear Sir or Madam', end with 'Yours faithfully,'
  - Again, whichever way you need to end your letter, it must be followed with a comma.

## Week 3

### English Literature

#### Percy Bysshe Shelley

##### Who was he?

- Born in 1792 in England.
- A leading figure of the Romantic movement.
- Known for his radical politics, belief in freedom, and passion for social change.
- Married to Mary Shelley, author of *Frankenstein*.
- Died young at 29 in a boating accident but left a huge legacy.

##### Key Features of Shelley's Poetry

###### 1. Rebellion and Revolution

Shelley believed in:

- Freedom
- Equality
- Challenging authority

###### 2. Nature as Power

Nature in Shelley's work is:

- Wild
- Beautiful
- Uncontrollable
- A symbol of freedom and inspiration

He often uses storms, winds, and natural forces to express emotion.

###### 3. Idealism and Hope

Shelley believed humans could build a better world. His poetry is full of:

- Optimism
- Vision
- Calls for change

## Week 3

### Mathematics

#### Ratio and Proportion

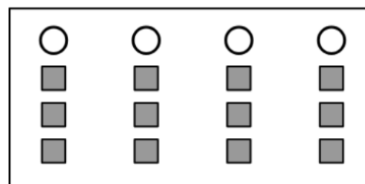
##### Useful definitions:

Key Vocabulary	Definition
Ratio	A ratio shows how much of one thing there is compared to another. Ratios are usually written in the form of $a : b$ .
Direct	Two variables are directly proportional when as one variable increases or decreases, the other variable increases or decreases at the same rate.
Inverse	Two quantities are inversely proportional when one quantity increases and the other quantity decreases.
Constant	The constant of proportion is the ratio between two directly proportional quantities.
Proportion	Proportion is used to show how quantities and amounts are related to each other.

##### Diagrams:

Complete these statements about the shapes in the diagram.

- a) For every **1** circle, there are **3** squares.
- b) The ratio of circles to squares is **1** : **3**.
- c) For every **3** squares, there **is 1 circle**.
- d) The ratio of squares to circles is **3** : **1**.



A bag contains 5 blue counters and 3 red counters.  
Write the ratio of blue counters to red counters.

**5 : 3**

## Week 3

### Biology

Type	Examples
Direct contact	This can be sexual contact during intercourse or non-sexual contact, like shaking hands.
Water	Dirty water can transmit many diseases, such as the cholera bacterium.
Air	When a person who is infected by the common cold sneezes, they can spray thousands of tiny droplets containing virus particles to infect others.
Unhygienic food preparation	Undercooked or reheated food can cause bacterial diseases like <i>Escherichia coli</i> which is a cause of food poisoning.
Vector	Any organism that can spread a disease is called a vector. Many farmers think tuberculosis in their cattle can be spread by badgers.

## Week 3

### Physics

**Trends in energy resources** – most of our electricity is generated by burning fossil fuels and nuclear. The UK is trying to increase the amount of renewable energy resources. The governments are aware that non-renewable energy resources are running out; targets of renewable resources have been set. Electric and hybrid cars are also now on the market.

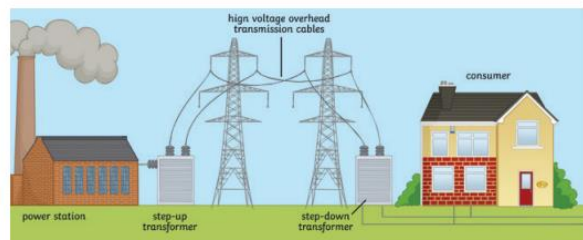
However, changing the fuels we use and building renewable power plants cost money. Many people are against the building of the plants near them and do not want to pay the extra in their energy bills. Hybrid and electric cars are also quite expensive.

#### The National Grid

The National Grid is a system of **cables** and **transformers**. They transfer electrical power from the power station to where it is needed. Power stations are able to change the amount of electricity that is produced to meet the demands. For example, more energy may be needed in the evenings when people come home from work or school. Electricity is transferred at a low current, but a high voltage so less energy is being lost as it travels through the cables.

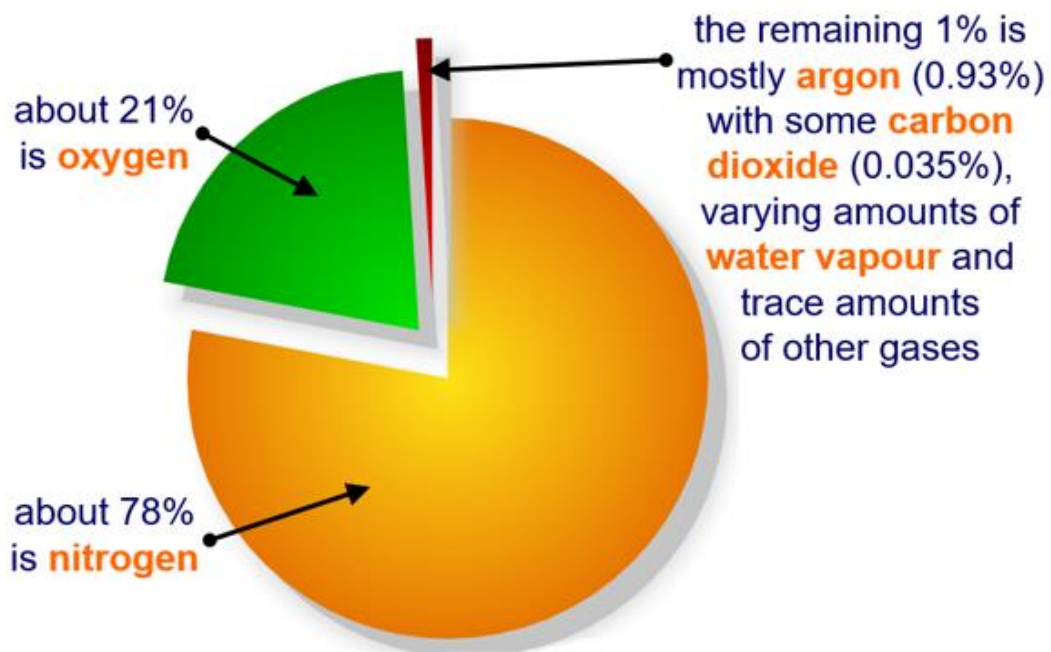
**Step-up transformers** – increase the voltage as the electricity flows through the cables.

**Step-down transformers** – decrease the potential difference to make it safe.



Week 3  
Chemistry

Composition of our atmosphere



- 80% of atmospheric gases are in the 15km closest to Earth .
- The composition of gases in our atmosphere has not changed significantly in the last 200 million years.
- Approximately one fifth of our atmosphere is oxygen.
- Carbon dioxide makes up about 0.035% of our atmosphere.
- About 1% of the atmosphere is argon gas

## Week 3

### Geography

Read through the following information on climate colonialism.

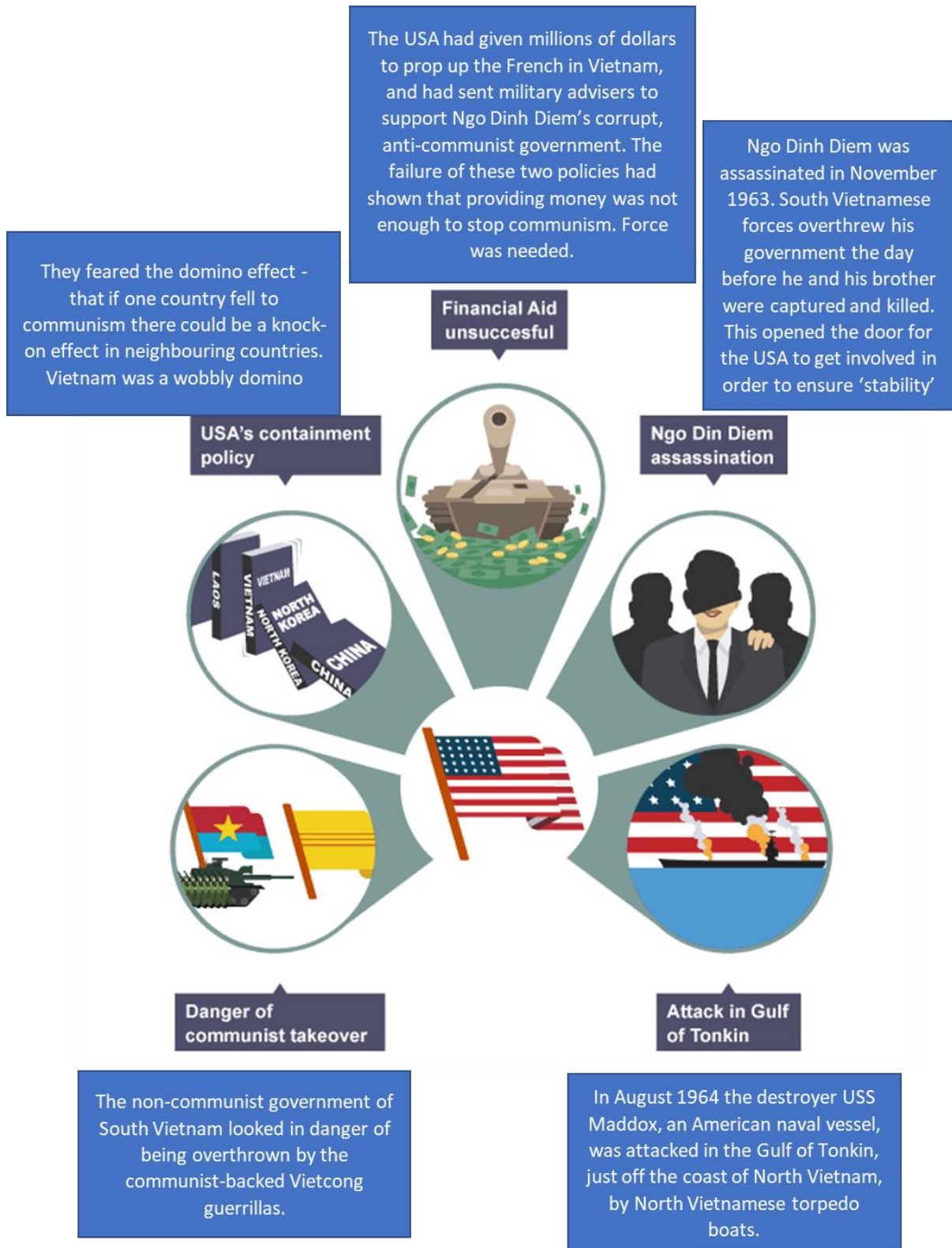
#### Climate colonialism

In 2015, Oxfam published a report, which included the graph you have just looked at, highlighting climate change injustice. As you discovered a small number of wealthy countries are responsible for most of the global carbon emissions, but it is the poorest, most vulnerable communities and countries, which have historically contributed the least to climate change, that are affected the most by its consequences. Climate change represents the ultimate example of 'disaster by choice'. This injustice has been termed climate colonialism.

The poorest 50 per cent are responsible for only 10 per cent of emissions; the richest 10 per cent are responsible for almost 50 per cent of lifestyle consumption emissions, but it is the poorest 50 per cent that are most vulnerable to the consequences of climate change.

# Week 3

## History



## Week 3









### Spanish

estudio	I study
hablo	I speak
bastante bien	quite well
muy bien	very well
un poco de	a bit of
un poquito de	a little bit of
inglés	English
español	Spanish
francés	French
alemán	German
japonés	Japanese
ruso	Russian
chino	Chinese
hindú	Hindi
voy al club de...	I go to the.....club
una lengua/un idioma te ayuda a	a language helps you
conocer otras personas	to meet other people
trabajar en el extranjero	to work abroad
hacer nuevos amigos	to make new friends
descubrir culturas nuevas	to discover other cultures
hacer negocios	to do business

## Week 3

### Personal Development

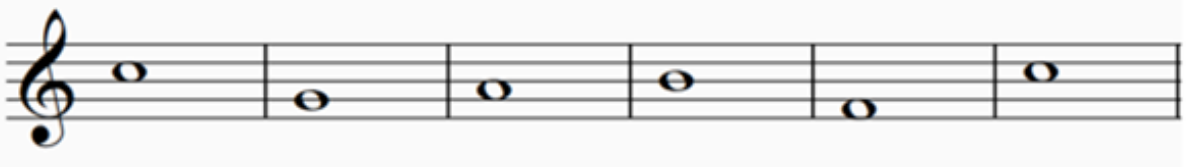
#### Protected Characteristics

<b>Age</b>	People cannot be treated unfairly because they are young or old. Everyone deserves respect, no matter their age	 AGE
<b>Disability</b>	People with physical or mental disabilities must be treated fairly, with <b>reasonable adjustments</b> made to support them in school, work, and life.	 DISABILITY
<b>Gender Reassignment</b>	A person is considered to be <i>transitioning</i> if they change their gender through actions like changing their name, pronouns, appearance, or having medical treatment to match their identity.	 GENDER REASSIGNMENT
<b>Marriage and Civil Partnership</b>	People must be treated equally whether they are married, in a civil partnership, or single.	 MARRIAGE AND CIVIL PARTNERSHIP
<b>Pregnancy and Maternity</b>	Pregnant people and new parents must not be treated unfairly because they are having or have had a baby.	 PREGNANCY AND MATERNITY
<b>Race</b>	No one should be treated unfairly because of their skin colour, nationality, or <b>ethnicity</b> (a person's cultural identity, which may include shared language, traditions, and history).	 RACE
<b>Religion or Belief</b>	Everyone has the right to follow their religion or beliefs, or to have no religion, without discrimination.	 RELIGION OR BELIEF
<b>Sex</b>	People must not be treated unfairly because they are biologically male or female.	 SEX

Week 3  
Music



D E F G A B C D E F G



## Week 4

### English Language

#### Power of a speech

- A speech is a formal talk given to an audience. It has an aim and purpose – often to either inform and/or persuade, although it's important to remember that some have other intentions too, e.g. to entertain.
- Speeches are used in many different contexts. A bride or groom may give a speech at their wedding. A politician or activist may give a speech to inform others of the need for change and persuade them of the right way to bring it about. A manager may need to give a speech to their employees or bosses. A speech may even be given when you leave school to reflect upon your time in education and inspire others to look to the future.
- Speeches are not necessarily something we do every day, but speech writing is a useful skill to have.
- Speeches are a powerful way of expressing your ideas to others.
- When writing a speech, you need to think carefully about how you structure it to make sure it is easy for listeners to follow.
- For it to be engaging, you need to consider the language you use, ensuring that you target your audience and their interests. In fact, there are a range of language techniques that can help to make your speech even more powerful.

# Week 4

## English Literature

### Ted Hughes

#### Who was he?

- Born in **1930** in Yorkshire.
- One of the most influential British poets of the 20th century.
- Known for his **powerful, physical, often brutal imagery**.
- Became **UK Poet Laureate** in 1984.

#### Key Features of Hughes' Poetry

##### 1. Nature as Wild and Violent

Hughes doesn't show nature as gentle — he shows its **raw power**. Animals in his poems often feel:

- Fierce
- Instinctive
- Dangerous
- Majestic

##### 2. Psychology and Instinct

Hughes explores:

- Human instincts
- Violence
- Power
- Survival

He often compares human behaviour to animal behaviour.

##### 3. Myth and Symbolism

Hughes draws on:

- Folklore
- Myth
- Archetypes

His poems often feel larger than life, full of symbolic meaning.

## Week 4

### Mathematics

#### Speed, Distance and Time

Useful definitions:

Key Vocabulary	Definition
Speed	Speed is a measure of how fast something or somebody is moving.
Distance	Distance is the length the object or person has travelled.
Time	Time is how long it took, hours, minutes or seconds.
Gradient	The gradient of the line on a speed-time graph is the acceleration.
Origin	The origin is the starting point on a speed-time graph.

Diagrams:

$$\text{Speed} = \frac{\text{Distance}}{\text{Time}}$$

$$\text{Distance} = \text{Speed} \times \text{Time}$$

$$\text{Time} = \frac{\text{Distance}}{\text{Speed}}$$

examples

Ruby walks 20 metres in 4 seconds

Work out Ruby's speed.

$$\begin{aligned}\text{Speed} &= \frac{\text{Distance}}{\text{Time}} \\ &= \frac{20}{4} \\ &= 5 \text{ m/s}\end{aligned}$$

Stewart cycles at an average speed of 12 km/h

Work out how far Stewart cycles in 2 hours.

$$\begin{aligned}\text{Distance} &= \text{Speed} \times \text{Time} \\ &= 12 \times 2 \\ &= 24 \text{ km}\end{aligned}$$

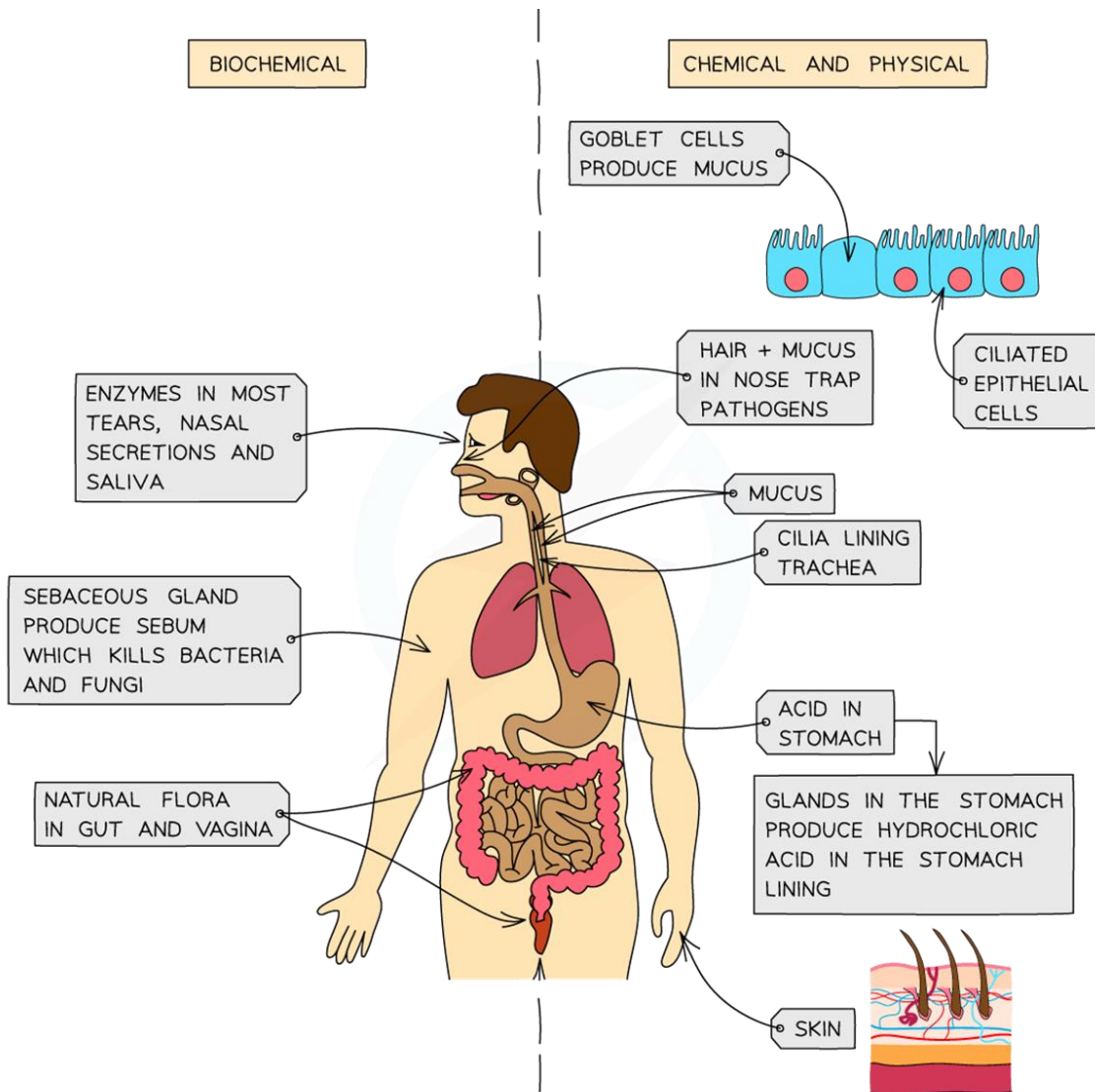
Tina drives at an average speed of 50 mph

How long will it take for Tina to drive 150 miles?

$$\begin{aligned}\text{Time} &= \frac{\text{Distance}}{\text{Speed}} \\ &= \frac{150}{50} \\ &= 3 \text{ hours}\end{aligned}$$

# Week 4

## Biology



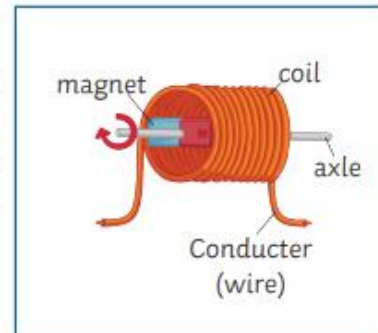
Copyright © Save My Exams. All Rights Reserved

## Week 4

### Physics

A **generator** uses an induced potential to produce an alternating current.

A magnet on an axle is positioned in a coil of wire. The poles of the magnet are on the outer edges as the magnet is spun on the axle. Every half-turn on the axle rotation, the poles are reversed (swap sides in the coil) and this causes the induced potential to change direction. This produces an alternating current in the conducting wire.



To increase the voltage of a induced potential you can...

1. increase the **strength of the magnet** used;
2. increase the **number of turns** in the conducting coil of wire;
3. increase the **area** of the coil;
4. increase the **speed of the movement** (of the magnet or conductor).

Turning the magnet more quickly will not only increase the **voltage**, but also increase the **frequency**.

### Transformers

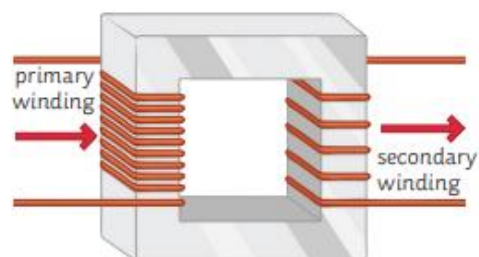
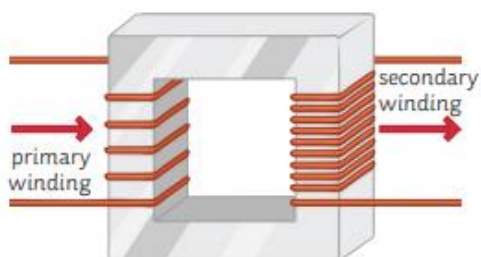
A **transformer** changes the **voltage** using an **induced potential** (electromagnetic induction).

Transformers only work for an **alternating current potential difference**. A transformer is simply **two coils of wire** (primary coil and secondary coil) connected by an **iron core**.

There are two main types:

**Step-up transformers:** **increase** (step-up) the **voltage**. There are fewer primary coils than there are secondary coils.

**Step-down transformers:** **decrease** (step-down) the **voltage**. There are more primary coils than there are secondary coils.

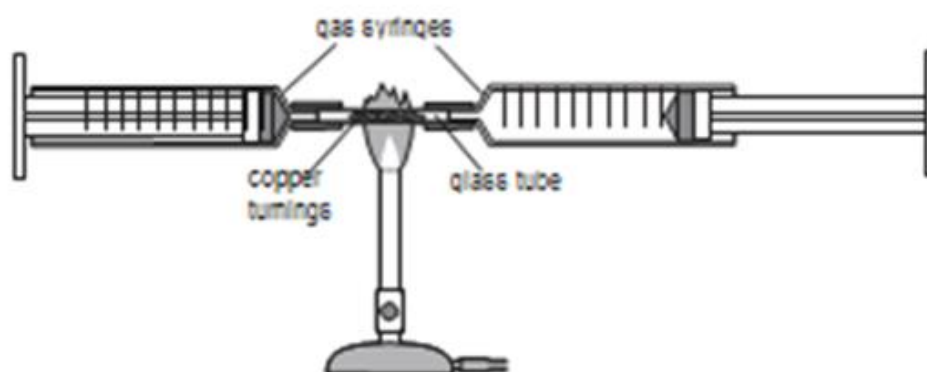


## Week 4

### Chemistry

#### Calculating the Percentage of Oxygen in our Atmosphere.

- Small pieces of copper are put into a tube between two gas syringes. This is then heated.
- The air from one syringe is passed back and forth between the syringes whilst the copper is heated.
- The oxygen from the air is taken by the copper to make copper oxide and so the volume of gas in the syringes reduces.
- This should give us an approximate percentage volume of oxygen in the atmosphere.



## Week 4

### Geography

Read through the information on climate change predictions for the UK.

#### Climate change predictions



In 50 years' time, by 2070 we project:

- winters will be between 1 and 4.5°C warmer and up to 30 per cent wetter
- summers will be between 1 and 6°C warmer and up to 60 per cent drier
- hot summer days will be between 4 and 7°C warmer
- more frequent and intense weather extremes, with heatwaves and intense rainfall.

Severe water shortages are expected as summers get drier and, by the 2050s, will extend across the UK. If temperatures are driven up significantly, many places in the UK will have a demand for water 2.5 times greater than that available.

Flooding already causes about £1 billion of damage every year, but the risks will rise further as climate change leads to more intense rainfall, bringing floods to places not currently in danger. The number of households at significant risk of flooding will more than double to 1.9 million by 2050, if the global temperature rises by 4°C.

The rise in world sea levels will mean an increase in sea level exceeding one metre and possibly as much as two metres on UK coasts by 2080. This, plus the increase in intense storm events, will cause greater coastal erosion. Low-lying and soft-sediment coastlines will be most at risk. The five most vulnerable coastlines are South Wales, North-West Scotland, Yorkshire, Lincolnshire, East Anglia and the Thames Estuary.

A warmer, wetter climate will bring benefits to British agriculture, allowing for year-round crop cover and opportunities to grow a more diverse range of crops that until recently were unable to grow here, such as maize.

The deadly heatwave of 2022, which peaked at over 40°C for the first time in the UK, will be a normal summer by the 2040s, and related deaths will more than triple. There are currently no policies to ensure homes, schools, hospitals and offices remain tolerable in high heat.

## Week 4

### History

Tactic	Information
Transportation	<ul style="list-style-type: none"><li>• The main form of transportation for the Vietcong was either by foot or by bicycle.</li><li>• This made it impossible for the Americans to cut off supplies from Russia and China as the Vietcong could always find a way through regardless of how much the Ho Chi Minh trail was bombed.</li></ul>
Ho Chi Minh Trail	<ul style="list-style-type: none"><li>• The Ho Chi Minh Trail was a network of paths that served as hidden route through the jungle for Viet Cong soldiers and Vietnamese Civilians.</li></ul>
Operation rolling thunder	<ul style="list-style-type: none"><li>• These were heavy bombing raids on Vietnamese towns, intended to destroy morale.</li><li>• In the picture, a giant B-52 'stratofortress' can be seen dropping a huge payload of bombs on the jungle. Sights like this were very common.</li></ul>
Napalm	<ul style="list-style-type: none"><li>• When the Americans suspected that they had found a Vietcong base, they would drop Napalm on the site.</li><li>• Napalm was a very flammable fluid, that would burn through almost anything.</li><li>• It often hit civilians.</li></ul>

## Week 4

### Spanish

en mi colegio	in my school
hay uniforme	there is a uniform
llevo	I wear
tengo que llevar	I have to wear
prefiero llevar	I prefer to wear
prefiero mi propia ropa	I prefer my own clothes
una chaqueta negra	a black blazer
unos pantalones negros	black trousers
una corbata violeta	a purple tie
unos zapatos negros	black shoes
una camisa blanca	a white shirt
lo bueno es que	the good thing is that
es fácil	it is easy
es elegante	it is elegant
lo malo es que	the bad thing is that





es caro	it is expensive
es incómodo	it is uncomfortable
no tengo libertad	I don't have freedom

## Week 4

### Personal Development

#### British Values

Schools follow British values to promote fairness, respect, and equality. They help create a safe, inclusive environment where everyone can learn, grow, and feel valued, no matter their differences. The British Values are as follows:

<b>Democracy</b>	Everyone has the right to have a say and make decisions, by voting or expressing their opinion.	
<b>Rule of Law</b>	Laws exist to keep people safe and ensure fairness. It's important to follow the law and respect rules, both at school and in society.	
<b>Individual Liberty</b>	Everyone has the freedom to make their own choices, whether it's about their beliefs, where they live, or what they want to do in life.	
<b>Mutual Respect</b>	We must respect each other's opinions, beliefs, and differences. Treating others with kindness and fairness is key to building a strong community.	
<b>Tolerance of Others</b>	It's important to respect and understand people's different religions, cultures, and beliefs, even if they are not the same as ours.	

## Week 4

### Music

The Ukulele is a small stringed instrument that originated in Hawaii during the late nineteenth century. It comes in different sizes, which affect its sound and playability.

The soprano ukulele is the smallest and produces a bright, traditional tone. The concert ukulele is slightly larger, with a fuller sound and a bit more space between frets, making it easier to play. The tenor ukulele is larger again, offering a deeper, louder tone and more room for fingerstyle playing. The baritone ukulele is the largest and has a lower, guitar-like sound.

Musicians choose different sizes depending on comfort, sound preference, and playing style.

#### *Ukulele Sizes/Scales*



*Soprano*  
Usually 53cm  
12-15 frets



*Concert*  
Usually 58cm  
15-20 frets



*Tenor*  
Usually 66cm  
15-25 frets



*Baritone*  
Usually 74cm  
18+ frets

## Week 5

### English Language

#### Structure of a speech

##### The opening

- Start with an opening that hooks your audience before making the overall topic of your speech clear. Get their attention and prepare them to focus on the words that will follow. For example, you could use:
- A powerful image: 'Imagine a huge clock - the slow, steady tick filling this room. Counting away the seconds and minutes we have left to act.'
- A shocking or surprising fact: 'Recently, I found out that up to one million species of plants and animals are threatened with extinction at this very moment.'
- A rhetorical question: 'Who wouldn't want to be a millionaire?'

Think carefully about how you want your audience to feel. A shocking fact may work well for some topics or audiences but a powerful image, for instance, may be more appropriate for others.

##### The main body of your speech

- Having a simple structure to the main part of your speech is important to help the audience follow your points and ideas. Think about which points are more important and focus on reinforcing them.
- It is a good idea to put the most important points near the beginning of the speech, making sure they are in a logical order. Include the most important supporting examples and facts, but don't overload the speech with too much detail.

##### Sign Off:

- Thank you for listening.

## Week 5

### English Literature

#### Beatrice Garland

##### Who is she?

- A **British poet**, born in 1938.
- Also worked as a **NHS clinician** and researcher in mental health.
- Her poetry often blends **personal experience, memory, and cultural observation**.
- Best known in schools for her poem "**Kamikaze**", which appears in the AQA Power and Conflict anthology.

##### Key Features of Garland's Poetry

###### 1. Blending the Personal and the Political

Garland often explores how **big historical events** affect **ordinary people** and families. *Kamikaze* is a perfect example: a national duty becomes a personal tragedy.

###### 2. Strong Visual Imagery

Her poems use:

- Nature
- Colour
- Movement to create vivid, cinematic scenes.

In *Kamikaze*, the sea, fish, and sunlight become symbols of life and temptation.

###### 3. Memory and Storytelling

Garland is interested in:

- How stories are passed down
- How families remember or forget
- How silence shapes identity

Her poems often feel like someone quietly telling a story that still hurts.

## Week 5

### Mathematics

#### Density, Mass and Volume

##### Useful definitions:

Key Vocabulary	Definition
Density	The density of an object or substance is its mass divided by its volume. The denser an object or substance is, the heavier it feels for its size.
Mass	The mass is the amount of matter in an object.
Volume	The volume of a shape measures the three-dimensional amount of space it takes up. Volume is measured in cubes.
Rearrange	A formula is rearranged by using inverse operations. Inverse operations include addition and subtraction, multiplying and dividing, squaring and square rooting.
Units	The units of density depend on the units used for mass and volume, but are generally $\text{g/cm}^3$ or $\text{kg/m}^3$ .

##### Diagrams:

The density of an object is its mass per unit volume.

The units for density are  $\text{g/cm}^3$  or  $\text{kg/m}^3$ .

$$\text{Density} = \frac{\text{Mass}}{\text{Volume}}$$

A cube has side lengths of 4cm and a mass of 83g.  
Work out the density of the cube correct to 2 significant figures.

$$\begin{aligned}\text{Volume} &= 4^3 \\ &= 64 \text{ cm}^3\end{aligned}$$

$$\begin{aligned}\text{Density} &= \text{Mass} \div \text{Volume} \\ &= 83 \div 64 \\ &= 1.296875 \\ &= 1.3 \text{ g/cm}^3 \text{ (2 s.f.)}\end{aligned}$$



## Week 5

### Biology

When pathogens enter your body and past the first line of defence the immune system kicks in to destroy them.

The important part is the white blood cells. They travel around the body patrolling for foreign pathogens.

Pathogens are identified by white blood cells because they have different surface proteins. We call these surface proteins antigens. The white blood cells know that the pathogen is not supposed to be in the body.

Every pathogen has a unique molecule on its surface called an 'antigen'

When a white blood cell comes across a foreign pathogen it recognises its antigen on its surface

It then begins to produce proteins called 'antibodies' which will only bind to their unique 'antigen'

This is like the 'lock & key' concept in enzymes

Antibodies are then produced rapidly and carried around the body to find all similar bacteria or viruses

If this pathogen infects the body again it will be recognised immediately and you will then be naturally immune to it.

## Week 5

### Physics

#### Electricity in the Home

**AC** – alternating current. Constantly changing direction - UK mains supply is 230V and has a frequency of 50 hertz (Hz).

**DC** – direct current. Supplied by batteries and only flows in one direction.

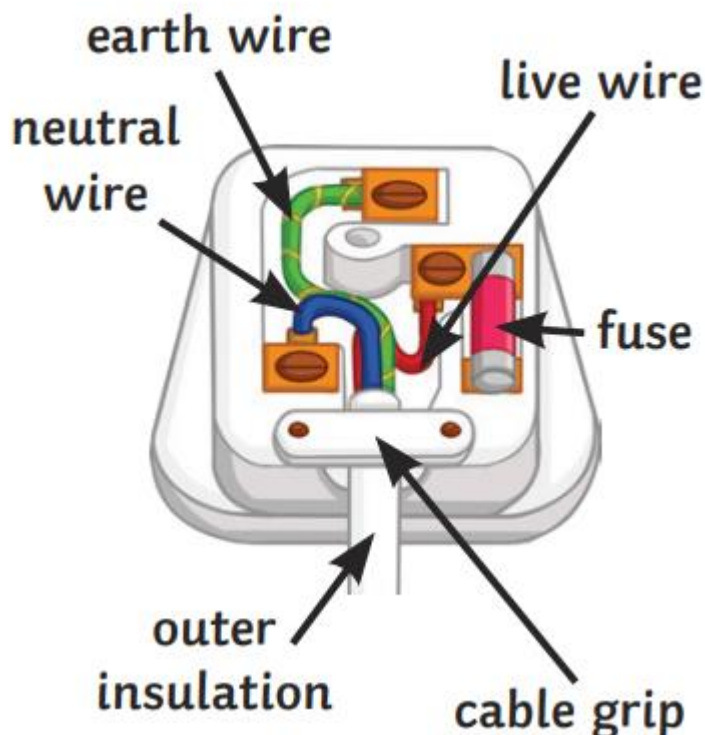
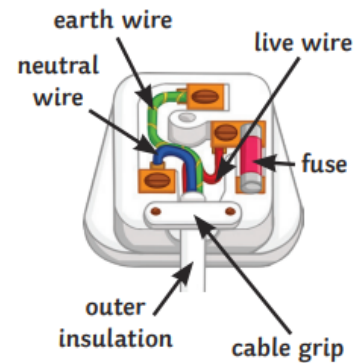
**Cables** – most have three wires: live, neutral and earth. They are covered in plastic insulation for safety.

**Live wire** – provides the potential difference from the mains.

**Neutral wire** – completes the circuit.

**Earth wire** – protection. Stops the appliance from becoming live. Carries a current if there is a fault.

Touching the live wire can cause the current to flow through your body. This causes an electric shock.

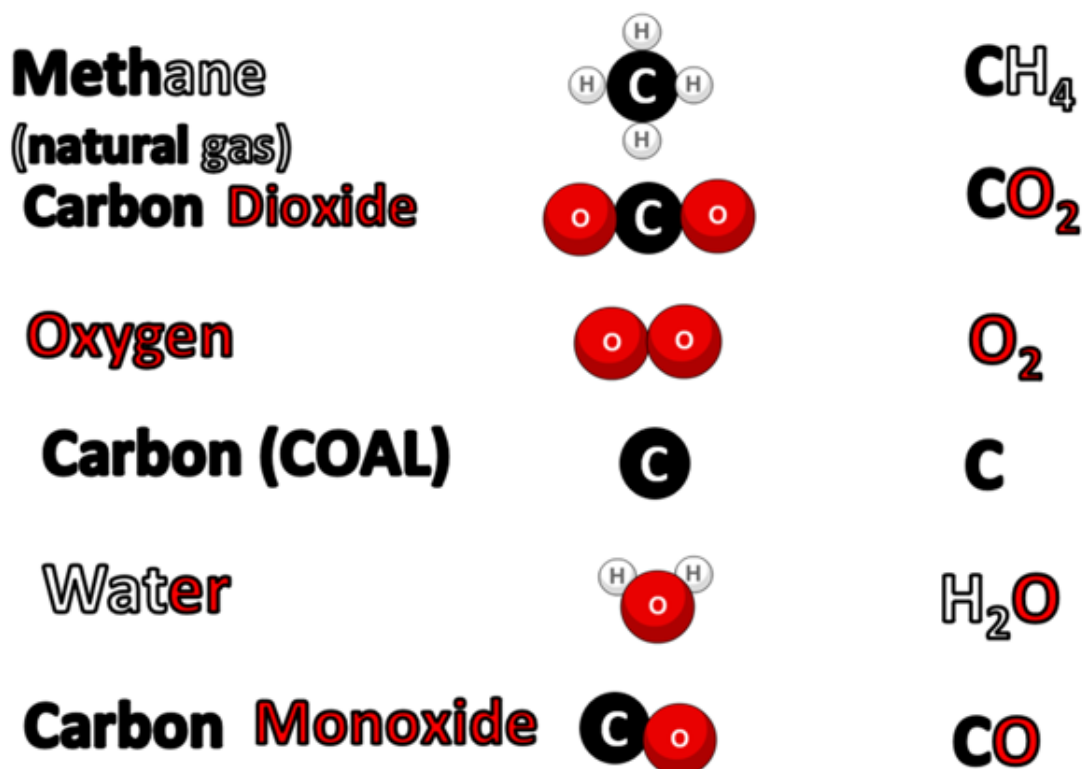


Week 5  
Chemistry

Combustion

- Combustion requires 3 things- fuel, oxygen and heat.
- Fuels include carbon (coal) and methane (gas)
- These fuels will burn in oxygen to make carbon dioxide or carbon monoxide.
- Combustion of methane will also produce water.

Molecules involved in combustion



## Week 5

### Geography

#### How can we mitigate against climate change?

Actions need to occur at different interconnected scales:

- **International** – climate change is a global issue, requiring international cooperation and big-picture strategies.
- **National** – national governments need to implement the decisions made at the global scale, to suit the needs of their unique national context.
- **Local** – local governments, communities, schools and individuals can make decisions and take actions in response to climate change, and put pressure on national bodies to implement strategies.
- **Personal** – what can you do in your own home?

**International:** At COP 21 in Paris on 12 December 2015, countries signed up to the Paris Agreement. The overarching goal of the agreement is to hold ‘the increase in the global average temperature to well below 2°C above pre-industrial levels’ and pursue efforts ‘to limit the temperature increase to 1.5°C above pre-industrial levels’.

**National:** A circular economy reuses and recycles with the aim of reducing the disposal of waste in landfill. Recycling generally produces less carbon emissions than creating brand new products. When you recycle materials it can help reduce deforestation, minimise greenhouse gas emissions from landfills, reduce energy consumption and eliminate the need for new raw materials to make products.

**Personal: Eat a plant-based diet** – beef cattle emit large quantities of methane into the atmosphere, so reducing cattle farming by changing diet makes a high impact.

**Go car free** – cars create carbon emissions; use mass public transport instead.

**Buy green energy** – using renewables means no burning fossil fuels, a major contributor to emissions.

**Avoid one transatlantic flight** – reducing the number of flights taken will reduce emissions.

**Live car free** – by not using a car at all you will have zero emissions.

**Have one fewer child** – a wealthy country would reduce an individual's carbon footprint by 7.8–58.6 tonnes per year over an 80-year lifespan.

## Week 5

### History

Tactic	Information
Transportation	<ul style="list-style-type: none"><li>• The main form of transportation for the Vietcong was either by foot or by bicycle.</li><li>• This made it impossible for the Americans to cut off supplies from Russia and China as the Vietcong could always find a way through regardless of how much the Ho Chi Minh trail was bombed.</li></ul>
Ho Chi Minh Trail	<ul style="list-style-type: none"><li>• The Ho Chi Minh Trail was a network of paths that served as hidden route through the jungle for Viet Cong soldiers and Vietnamese Civilians.</li></ul>
Operation rolling thunder	<ul style="list-style-type: none"><li>• These were heavy bombing raids on Vietnamese towns, intended to destroy morale.</li><li>• In the picture, a giant B-52 'stratofortress' can be seen dropping a huge payload of bombs on the jungle. Sights like this were very common.</li></ul>
Napalm	<ul style="list-style-type: none"><li>• When the Americans suspected that they had found a Vietcong base, they would drop Napalm on the site.</li><li>• Napalm was a very flammable fluid, that would burn through almost anything.</li><li>• It often hit civilians.</li></ul>

## Week 5

### Spanish









prefiero llevar	I prefer to wear
quiero llevar	I want to wear
me gustaría llevar	I would like to wear
mi propia ropa	my own clothes
unos vaqueros	jeans
unas zapatillas (de deporte)	shoes
un jersey	a jumper
una falda	a skirt
una camiseta	a t-shirt
unas botas	boots
unos pantalones cortos	shorts
un vestido	a dress
es más práctico	it is more practical
es más cómodo	it is more comfortable
es más fresco	it is cooler

es más individual	it is more individual
es mejor cuando hace calor/frío	it is better when it is hot/cold

## Week 5

### Personal Development

#### Protected Characteristics

<b>Age</b>	People cannot be treated unfairly because they are young or old. Everyone deserves respect, no matter their age	 AGE
<b>Disability</b>	People with physical or mental disabilities must be treated fairly, with <b>reasonable adjustments</b> made to support them in school, work, and life.	 DISABILITY
<b>Gender Reassignment</b>	A person is considered to be <i>transitioning</i> if they change their gender through actions like changing their name, pronouns, appearance, or having medical treatment to match their identity.	 GENDER REASSIGNMENT
<b>Marriage and Civil Partnership</b>	People must be treated equally whether they are married, in a civil partnership, or single.	 MARRIAGE AND CIVIL PARTNERSHIP
<b>Pregnancy and Maternity</b>	Pregnant people and new parents must not be treated unfairly because they are having or have had a baby.	 PREGNANCY AND MATERNITY
<b>Race</b>	No one should be treated unfairly because of their skin colour, nationality, or <b>ethnicity</b> (a person's cultural identity, which may include shared language, traditions, and history).	 RACE
<b>Religion or Belief</b>	Everyone has the right to follow their religion or beliefs, or to have no religion, without discrimination.	 RELIGION OR BELIEF
<b>Sex</b>	People must not be treated unfairly because they are biologically male or female.	 SEX

## Week 5

### Music

Bhangra music is a lively and energetic style of music that originates from the Punjab region of India and Pakistan. It was originally linked to traditional harvest celebrations, where farmers would dance to celebrate the season.

Modern bhangra combines traditional Punjabi folk rhythms with contemporary styles such as pop, hip-hop, and electronic dance music.

A key feature of bhangra is the strong beat created by the dhol drum, along with other instruments like the tumbi (a single stringed instrument).

The music is often fast-paced and designed for dancing, with repetitive rhythms and catchy vocals. Bhangra has become popular worldwide, especially in the UK, where it has influenced many fusion music styles and club scenes.



Week 6

English Language

**What makes a successful SLE?**

- Presenting on a topic close to your heart
- Selecting a topic which you have a keen interest in and may be relevant in today's world
- Selecting a topic which may impact upon the lives of yourself and/or your peers
- Having a clear focus which aims to answer or explore an interesting and relevant question in today's world
- A well-planned response with convincing ideas, detail and information
- Confidence – relying upon extensive notes will affect your teacher's assessment of your presentation

# Week 6

## English Literature

### **Stanza**

A stanza is a group of lines in a poem — like a paragraph in poetry.

Poets use stanzas to organise ideas, create rhythm, or show a change in mood or topic.

### **Key Features of a Stanza**

#### **1. A block of lines**

A stanza can be:

- 2 lines (couplet)
- 3 lines (tercet)
- 4 lines (quatrain)
- or any number of lines

#### **2. Often separated by a blank line**

This helps the reader see where one idea ends and another begins.

#### **3. Shows shifts**

A new stanza can signal:

- a new idea
- a new emotion
- a change in time or perspective

#### **4. Helps with rhythm and structure**

Stanzas can create patterns, repetition, or contrast.

Week 6  
Mathematics

Useful definitions:

Key Vocabulary	Definition
<u>Simplify</u>	Simplifying or collecting <b>like terms</b> means to simplify terms in expressions in which the variables are the same.
<u>Expand</u>	<b>Expanding brackets</b> means multiplying everything inside the bracket by the letter or number outside the bracket, this get rid of the brackets
<u>Factorise</u>	<b>Factorising</b> is the opposite process of expanding brackets. A factorised answer will always contain <b>a set of brackets</b> .
<u>Term</u>	A value in a sequence or An element within an algebraic sentence. Elements (terms) are separated by + or - signs.
<u>Expression</u>	A mathematical sentence expressed either numerically or symbolically, made up of one or more terms combined by operators (+, -, $\times$ , $\div$ )
<u>Variable</u>	A quantity that can take any value
<u>equation</u>	A mathematical statement showing that two expressions are equal. The expressions are linked with the symbol =

## Week 6

### Biology

People can become immunised against a pathogen through vaccination.

Vaccinations trick the body into thinking it has become infected!

Immune: Not being able to catch a particular disease because you have antibodies in your blood to fight it.

Vaccination involves putting a small amount of an inactive form of a pathogen, or a dead pathogen, into the body.

Vaccines contain:

1. live pathogens treated to make them harmless
2. harmless fragments of the pathogen
3. toxins produced by pathogens
4. dead pathogens

## Week 6

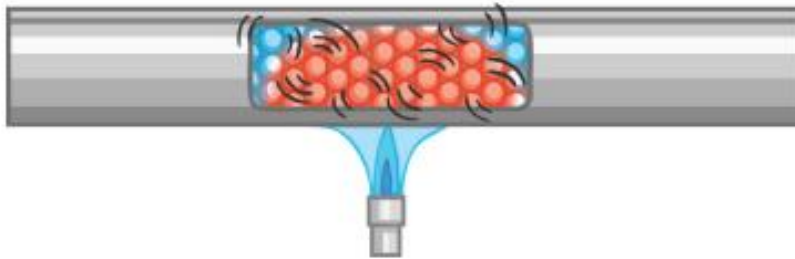
### Physics

#### Energy Transfer

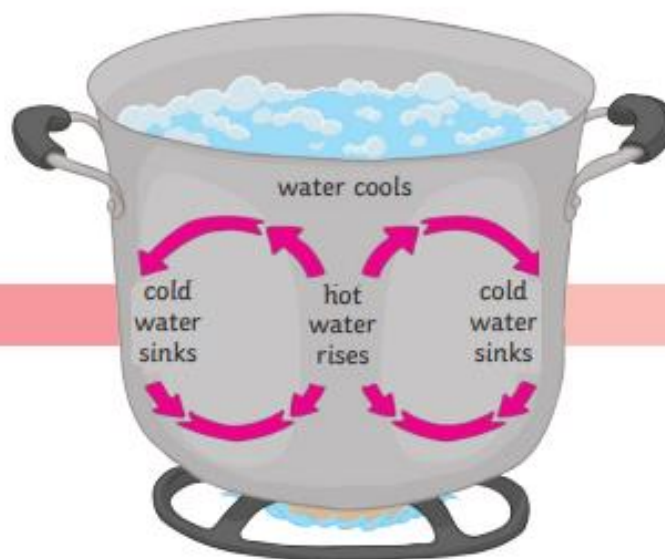


**Lubrication reduces the amount of friction.** When an object moves, there are frictional forces acting. Some energy is lost into the environment. Lubricants, such as oil, can be used to reduce the friction between the surfaces.

**Conduction** – when a solid is heated, the particles vibrate and collide more, and the energy is transferred.



**Convection** – when a liquid or a gas is heated, the particles move faster. This means the liquid or gas becomes less dense. The denser region will rise above the cooler region. This is a convection current.



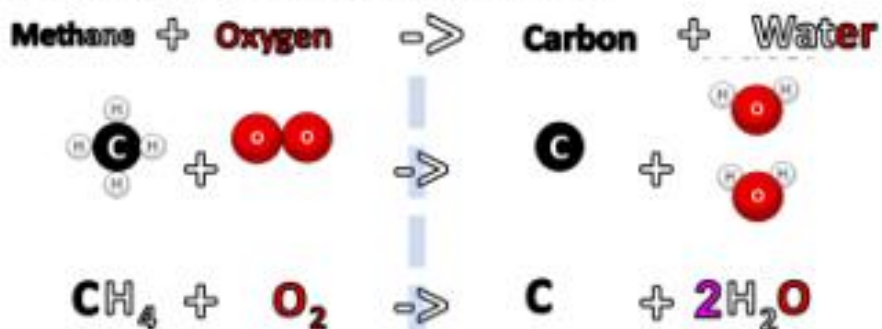
# Week 6

## Chemistry

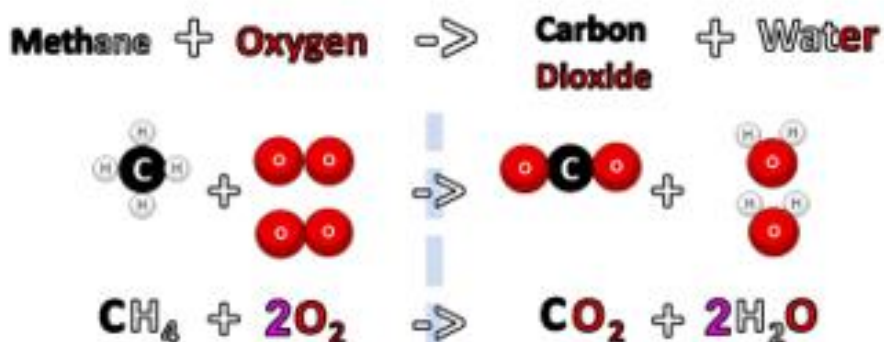
### Combustion Equations

There are 3 types of combustion equations:

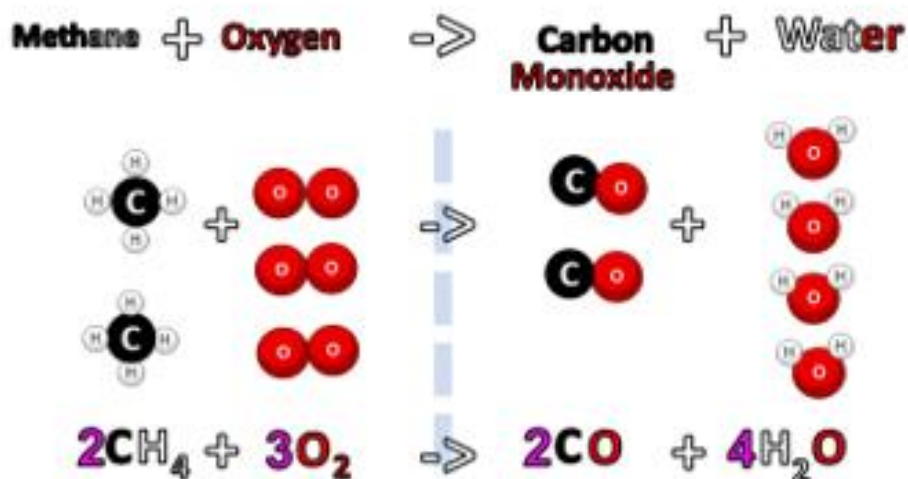
#### Combustion 1- In-complete (limited oxygen)



#### Combustion 2- Complete (plenty of oxygen)



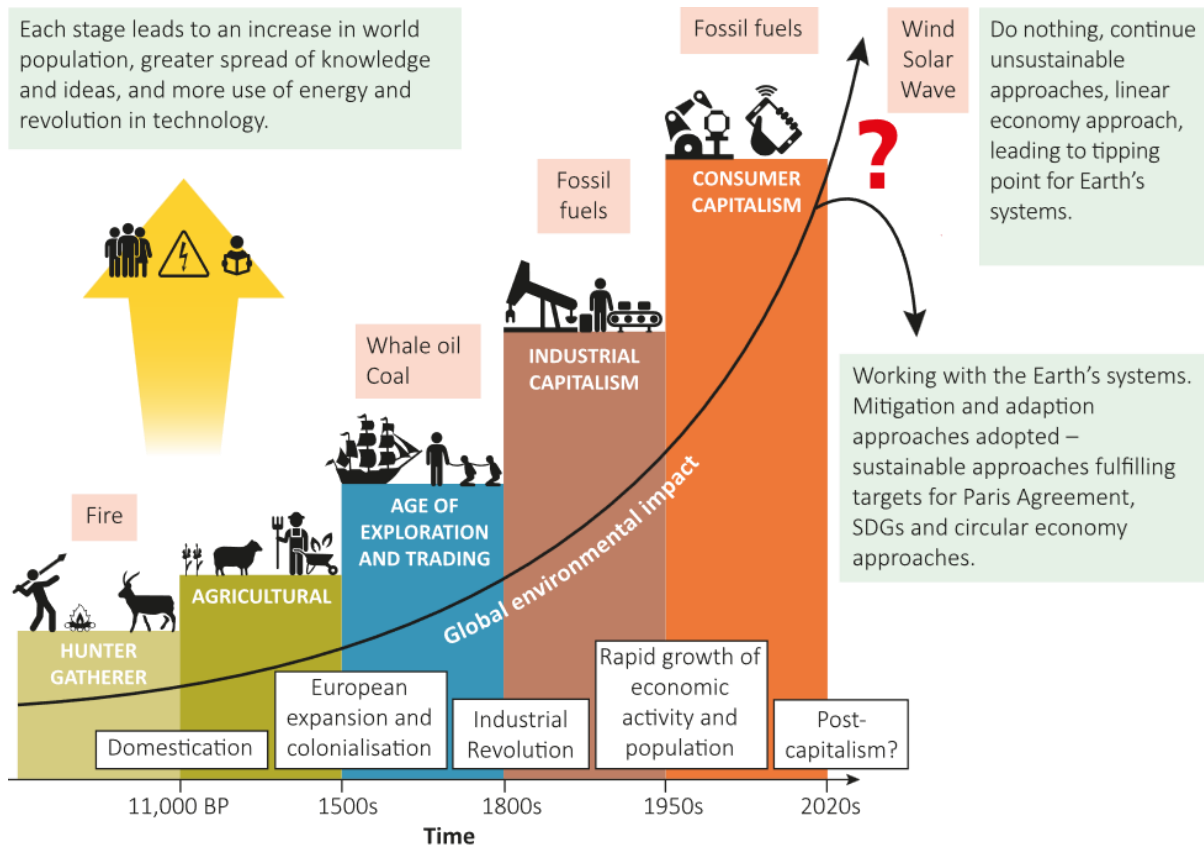
#### Combustion 3 In-complete (limited oxygen)



## Week 6

### Geography

#### How have people impacted the Earth's systems?



Five impacts or evidence of the Anthropocene could include any of the following:

- extreme weather events
- rise in global temperatures above pre-Industrial Revolution levels
- extinction of species
- increased levels of carbon dioxide in the atmosphere
- plastics in rivers and oceans
- double the amount of nitrogen and phosphorous in soils.

## Week 6

### History

Vietnam was the first televised war. It was vividly reported by journalists who went to Vietnam in search of stories. Images of innocent civilians being killed, maimed and tortured were displayed on the TV and in newspapers - many Americans were horrified and turned against the war.

Anti-war demonstrations grew as the war dragged on and more Americans turned against it

In 1966, the SNCC accused the USA of violating international law and called for withdrawal from Vietnam

In August 1968, 10, 000 protesters marched in Chicago

In November 1968, 35,000 protested outside the White House in Washington

In November 1969, 700,000 protested outside the White House in Washington.

In March 1971, 300,000 took part in the Vietnam Veterans March

Desertion rates doubled from 47,000 in 1967 to 89,000 in 1971

Women were often excluded from anti-war groups because it was assumed that they could not understand the experience and impact of being drafted and fighting. However, many women formed their own opposition groups

## Week 6

### Spanish

se debe llegar a tiempo	you must arrive on time
se debe escuchar al profesor	you must listen to the teacher
se debe llevar uniforme	you must wear a uniform
no se debe correr por los pasillos	you must not run in the corridors
no se debe usar el móvil	you must not use your mobile phone
no se debe llevar maquillaje	you must not wear makeup
no se debe llevar zapatillas de deporte	you must not wear trainers
no se debe comer en clase	you must not eat in lessons
estoy de acuerdo con	I agree with
estoy a favor de	I am in favour of
estoy en contra de	I am against
es útil	it is useful
es necesario	it is necessary
es bueno para mi educación	it is good for my education

es innecesario	it is unnecessary
es estúpido	it is stupid
es inútil	it is pointless

## Week 6

### Personal Development

#### British Values

Schools follow British values to promote fairness, respect, and equality. They help create a safe, inclusive environment where everyone can learn, grow, and feel valued, no matter their differences. The British Values are as follows:

<b>Democracy</b>	Everyone has the right to have a say and make decisions, by voting or expressing their opinion.	
<b>Rule of Law</b>	Laws exist to keep people safe and ensure fairness. It's important to follow the law and respect rules, both at school and in society.	
<b>Individual Liberty</b>	Everyone has the freedom to make their own choices, whether it's about their beliefs, where they live, or what they want to do in life.	
<b>Mutual Respect</b>	We must respect each other's opinions, beliefs, and differences. Treating others with kindness and fairness is key to building a strong community.	
<b>Tolerance of Others</b>	It's important to respect and understand people's different religions, cultures, and beliefs, even if they are not the same as ours.	

## Week 6

### Music

UK drill is a style of rap music that originated in London in the early 2010s. It developed from Chicago drill but evolved into its own distinct sound. UK drill is known for its dark, gritty themes, often reflecting life in urban environments, as well as its aggressive delivery and heavy use of slang.

The music typically features fast hi-hats, sliding basslines, and minimalist, ominous beats. Lyrics are often delivered in a rhythmic, almost spoken style over intense production.

UK drill has become influential in both music and fashion, spreading internationally and shaping modern UK rap culture.

Artists like Headie One and Central Cee have helped bring the genre to

