

# ***CLEETHORPES ACADEMY***

## ***HOME LEARNING***

Summer Term: 2

YEAR 8



We Are ***CARING***

We Are ***CURIOUS***

We Are ***CREATIVE***

# Week 1

## English Language

Alliteration – The repetition of same at the beginning of words near each other for effect.

Rhetorical questions – A question asked which does not require an answer.

Exaggeration – Stretching a particular opinion for effect.

Direct address – When the writer speaks to the reader directly.

Facts – A true statement.

Opinion – A held attitude or viewpoint.

Repetition – repeating a particular word/phrase for effect.

Emotive Language – Using powerful language in order to make your reader feel emotional.

Statistics – Factual numbers – often percentages – which provide the writer with more credibility.

Tripartite – Using three of the same word class for effect.

# Week 1

## English Literature

**Strategic:** Planning carefully and thinking ahead in order to achieve success.

**Corruption:** Using one's power in an illegal or dishonest way to make life better for oneself.

**Dictatorship:** A system of government where one leader has total power and makes all of the decisions. They often use fear to stay in control.

**Criticise:** Showing disapproval of something and revealing what is dangerous/wrong about it.

**Allegory:** A story which possesses a hidden meaning. Allegories often feature animal characters and are usually written in 3<sup>rd</sup> person.

**Comrade:** A fellow soldier/brother - an equal.

**Revolution:** An attempt, by many people, to change the government of a country. The attempt often involves force.

## Week 1

### Mathematics

#### Reflection in diagonal lines

	Tips
<b>Reflection in a diagonal line</b>	<ul style="list-style-type: none"><li>• Pick a vertex on the object shape.</li><li>• Work out the perpendicular distance to the mirror line. This is done by drawing a line from the vertex which passes through the diagonal of each square on the grid until the mirror line is reached.</li><li>• Count the same perpendicular distance from the mirror line to the opposite side of the mirror line. This will be the position of the reflected vertex.</li><li>• Repeat the process for additional vertices.</li></ul>

A reflection in the line  $y = x$



Week 1

Biology

Food type	Test With	Heat needed?	Positive test colour
Starch	iodine	No	Orange to blue-black
Glucose (sugar)	Benedicts	Yes	Blue to brick red
Protein	Biuret	No	Blue to lilac
Lipids (fat)	Ethanol	No	White emulsion

Week 1

Physics

## What affects the amount of kinetic energy?



mass



velocity

The mass of an object is **the amount of matter or 'stuff' it contains.**

Mass is **measured in kilograms, kg.**

The more matter an object contains, the greater its mass.  
E.g. An elephant contains more matter than a mouse, so it has a greater mass..

### SPEED VS. VELOCITY

BYJU'S  
The Learning App

- The velocity of an object is its speed in a particular direction.

Speed is simply  
how fast you are travelling



This car is travelling at  
a speed of 20 m/s

- Velocity is a vector quantity because it has both a magnitude and an associated direction.

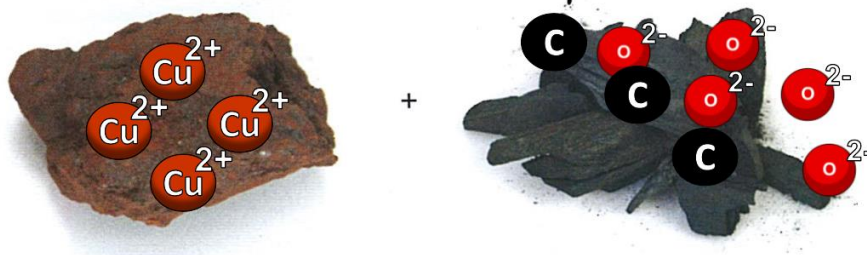
Velocity is  
Speed in a given direction



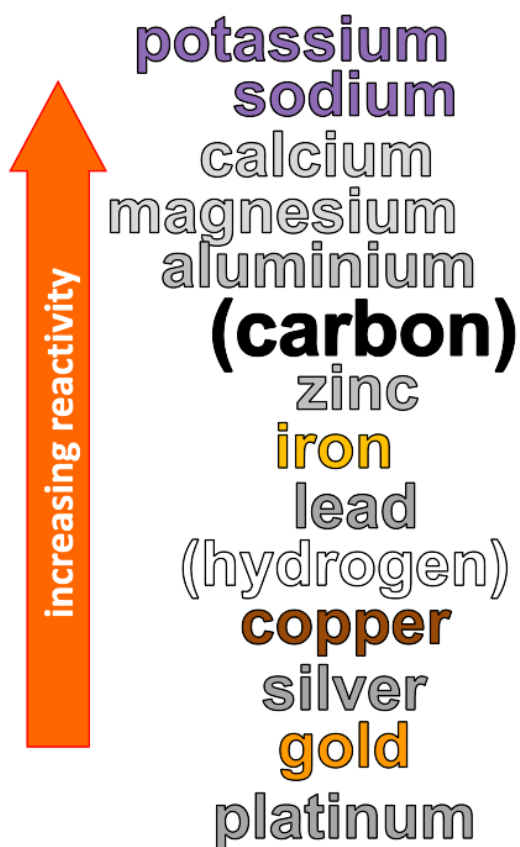
This car is travelling at  
a velocity of 20 m/s east

Week 1  
Chemistry

carbon + copper oxide  $\rightarrow$  copper + carbon dioxide



**Carbon is more reactive  
and displaces the less  
reactive Copper**



# Week 1

## Geography

Explore the continent's nations by their primary geographic regions:

<b>Central Asia</b> <ul style="list-style-type: none"><li>• Kazakhstan</li><li>• Kyrgyzstan</li><li>• Tajikistan</li><li>• Turkmenistan</li><li>• Uzbekistan</li></ul>	<b>Eastern Asia</b> <ul style="list-style-type: none"><li>• China</li><li>• Japan</li><li>• Mongolia</li><li>• North Korea</li><li>• South Korea</li><li>• Taiwan</li></ul>
<b>South-Eastern Asia</b> <ul style="list-style-type: none"><li>• Brunei</li><li>• Cambodia</li><li>• Indonesia</li><li>• Laos</li><li>• Malaysia</li><li>• Myanmar (Burma)</li><li>• Philippines</li><li>• Singapore</li><li>• Thailand</li><li>• Timor-Leste (East Timor)</li><li>• Vietnam [1, 2]</li></ul>	<b>Southern Asia</b> <ul style="list-style-type: none"><li>• Afghanistan</li><li>• Bangladesh</li><li>• Bhutan</li><li>• India</li><li>• Iran</li><li>• Maldives</li><li>• Nepal</li><li>• Pakistan</li><li>• Sri Lanka</li></ul>
<ul style="list-style-type: none"><li>• Armenia</li><li>• Azerbaijan</li><li>• Bahrain</li><li>• Cyprus</li><li>• Georgia</li><li>• Iraq</li><li>• Israel</li><li>• Jordan</li><li>• Kuwait</li><li>• Lebanon</li></ul>	<b>Western Asia (Middle East &amp; Caucasus) [1]</b> <ul style="list-style-type: none"><li>• Oman</li><li>• Palestine</li><li>• Qatar</li><li>• Saudi Arabia</li><li>• Syria</li><li>• Turkey</li><li>• United Arab Emirates (UAE)</li><li>• Yemen</li></ul>

## Week 1

### Music



Dynamics	How loud or soft the music is, and how it changes.
Rhythm	The pattern of long and short sounds; the beat of the music.
Structure	How the music is organised – for example, verse, chorus.
Melody	The main tune of the music. The part you can hum or sing.
Instrumentation	The types of instruments or voices used.
Texture	How many musical layers there are and how they fit together
Harmony	Different notes played or sung at the same time.





## Week 1

### Spanish

<b>Healthy eating</b>	
la comida sana	healthy food
la comida malsana	unhealthy food
como	I eat
no como	I don't eat
tomo	I have (food)
no tomo	I don't have (food)
me gusta(n)	I like
no me gusta(n)	I don't like
prefiero	I prefer
el jamón	ham
la fruta	fruit
las verduras	vegetables
la ensalada	salad
el pescado	fish
la carne	meat
La leche	milk
el zumo de naranja	orange juice
El agua	water

Week 1

RE

Religion	Religious Building	Holy Book
Judaism	Synagogue	Tenakh
Christianity	Church	Bible
Islam	Mosque	Qur'an
Hinduism	Mandir	Sruti and smriti
Sikhism	Gurdwara	Guru Granth Shahib
Buddhism	Viharas	Tipitaka

## Week 1

### Personal Development

#### British Values

Schools follow British values to promote fairness, respect, and equality. They help create a safe, inclusive environment where everyone can learn, grow, and feel valued, no matter their differences. The British Values are as follows:

<b>Democracy</b>	Everyone has the right to have a say and make decisions, by voting or expressing their opinion.	 DEMOCRACY
<b>Rule of Law</b>	Laws exist to keep people safe and ensure fairness. It's important to follow the law and respect rules, both at school and in society.	 RULE OF LAW
<b>Individual Liberty</b>	Everyone has the freedom to make their own choices, whether it's about their beliefs, where they live, or what they want to do in life.	 INDIVIDUAL LIBERTY
<b>Mutual Respect</b>	We must respect each other's opinions, beliefs, and differences. Treating others with kindness and fairness is key to building a strong community.	 MUTUAL RESPECT
<b>Tolerance of Others</b>	It's important to respect and understand people's different religions, cultures, and beliefs, even if they are not the same as ours.	 TOLERANCE

## Week 2

# English Language

Symbolism: When an image/idea represents another wider idea.

Juxtaposition: Opposite ideas placed closely together for effect.

Abstract nouns: Things which aren't tangible and do not have physical forms. Often emotions.

Collective/universal first-person pronouns: Words which refer to you and a group collectively, eg: 'we'.

Anecdotes: A real-life relevant story which supports the ideas put forth in the piece of writing.

Anaphora: Repetition at the start of successive lines.

Hyperbole: Exaggeration

Litotes: Intentional under-exaggeration for effect.

## Week 2

### English Literature

Farmer Jones – Represents Tsar Nicholas II of Russia, the deposed former ruler of the country.

Old Major – Represents Lenin, the founder of the Soviet Union who passed away in 1924.

Snowball – Represents Leon Trotsky – the intelligent and innovative politician who is ousted.

Napoleon – Represents the cunning political scheming and ambition of Joseph Stalin

Boxer and Clover – Represent the hardworking working classes who are exploited by the ruling elite.

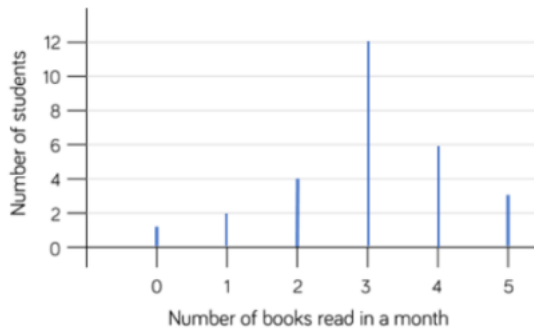
Manor Farm ('Animal Farm') represents Russia and its rebranding to 'The Soviet Union'.

# Week 2

## Mathematics

### Pictograms, bar charts and line charts

Useful definitions:

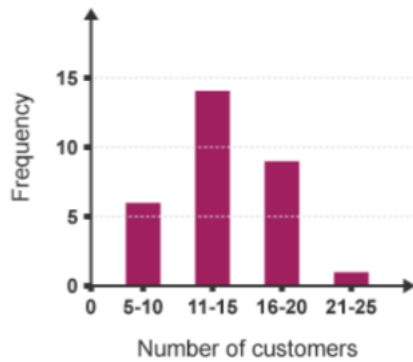


## Pictogram

Number of ice lollies sold this week



## Bar Chart



## Week 2

### Biology

#### Carbohydrase

- An enzyme that breaks down carbohydrates into sugar molecules
- This happens in the mouth (saliva), stomach and small intestine

#### Protease

- An enzyme that breaks down proteins into amino acids
- This happens in the stomach and small intestine

#### Lipase

- An enzyme that breaks down lipids into fatty acids and glycerol
- This happens in the small intestine
- The digestion of lipids is helped by bile from the liver
- Bile makes lipase's job easier

## Week 2

### Physics

- Speed is a way of saying how far you travel in a certain amount of time.
- Usually we use the units meters per second (m/s) to measure speed, however there are other units we can also use.

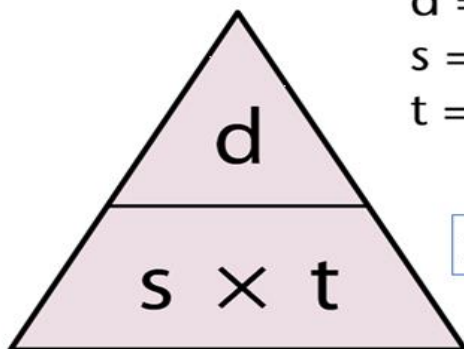


- What is the measurement of speed?

Miles per hour, Km per hour, meters per minute, meters per second.

## Calculating speed

You can remember these formulae by remembering this triangle:



d = distance travelled

s = mean speed

t = time taken

$$\text{Speed} = \text{distance} \div \text{time}$$

- The runner below finishes the race in 20 seconds
- What is her speed?
- Distance = 100m and time = 20s
- $100 \div 20 = 5\text{m/s}$



## Week 2

### Chemistry

All ceramic materials have similar physical properties. They are:

Density	How heavy the material is for its size
Hard	Not easy to dent or scratch
Stiff	Does not bend easily
compressive strength	lots of squashing force needed to break the material
brittle	they break easily
high melting points	solid at room temperature
Un-reactive	They do not react with water, acids, or alkalis.
Low tensile strength	break easily when stretched
electrical insulators	do not conduct electricity

Examples of ceramics:

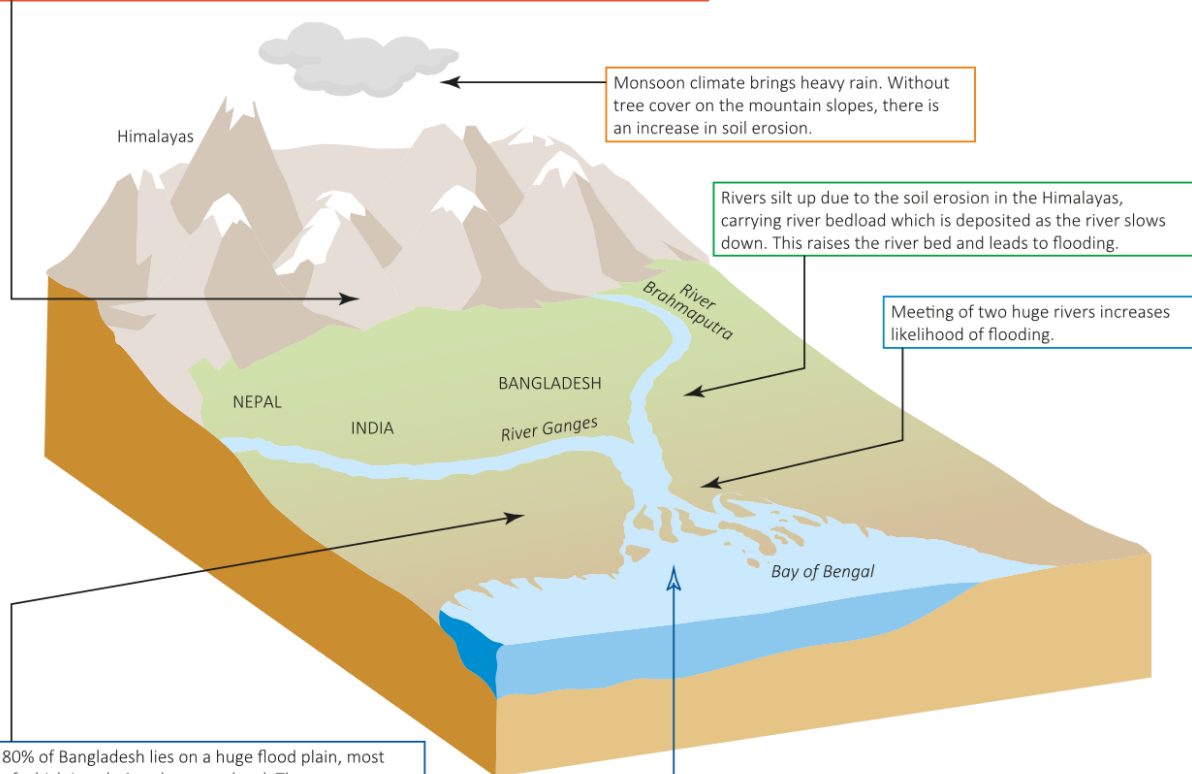


Key Vocabulary	Definition
Pictogram	A <b>pictogram</b> uses pictures or symbols to represent data or information. Each picture represents a number of items. The title of the pictogram tells us what the information is about.
Bar Chart	A bar chart shows the frequency of events occurring. The height of the bar is the frequency.
Tally	A way of recording data that counts in groups of five. The data is tallied as it is counted, with a mark for each piece of data
Frequency	A number of times a number or item is recorded in a set of data

# Week 2

## Geography

Trees are chopped down in the foothills of the Himalayas in Nepal, leading to a decrease in levels of interception. Without the roots of trees to hold the soil together, soil erosion increases, placing material into rivers, and causing an increase in landslides.



Monsoon climate brings heavy rain. Without tree cover on the mountain slopes, there is an increase in soil erosion.

Rivers silt up due to the soil erosion in the Himalayas, carrying river bedload which is deposited as the river slows down. This raises the river bed and leads to flooding.

Meeting of two huge rivers increases likelihood of flooding.

80% of Bangladesh lies on a huge flood plain, most of which is only 1m above sea level. These areas are farmed intensely, with poor people moving onto these vulnerable areas to grow rice crops for the family.

Cyclones (violent storms) frequently move up the Bay of Bengal, flooding the coastal regions which are low lying.

## Week 2

### History

WWII	1939-1945
Word	Definition
Fascist	A political philosophy characterised by authoritarian views and a strong central government and no tolerance for opposing opinions.
Dictator	One person makes all the rules and decisions without input from anyone else. Latin dictare = repeat, say often
Democracy	Demos = people Kratos = rule. Government based on participation of the people
Appeasement	Giving Hitler what he wants to avoid war
Empire	A group of countries under the rule of one country
Rationing	When something is in short supply making sure there's enough of it for emergencies. Carefully controlling the amount of something that people use
Change	Any thing or state that is different from what it once was
Cause	A reason something happens

## Week 2

### Spanish

Healthy diet	
¿Tienes una dieta sana?	Do you have a healthy diet?
Tengo una dieta sana	I have a healthy diet
No tengo una dieta sana	I don't have a healthy diet
tiene	it has
tienen	they have
contiene	It contains
contienen	they contain
vitaminas	vitamins
minerales	minerals
hidratos de carbono	carbohydrates
fibra	fibre
calcio	calcium
grasa	Fat
como	I eat
tomo	I have
bebo	I drink
siempre	always
normalmente	normally

## Week 2

### RE

Hinduism began in the Indus and Saraswati Valleys in North India over 3500 years ago: it is the world's oldest religion.

Today, three countries have Hindu majority populations — India, Nepal and Mauritius. There are Hindu communities in almost every country in the world: for example, almost 2 per cent of the UK population is Hindu.

Hindus are divided into four main groups: Vaishnavites, Shaivites, Shaktivites and Smartas.

The Hindu place of Worship is called mandir. These are built to follow specific designs. The statues in the temple are believed to have the essence of a deity within them, so when a person prays they can pray directly to that deity.

Hindus worship every day. Most families have a small mandir in their home, dedicated to one deity, so that they can worship every morning. An act of worship is called a puja. For Hindus, pilgrimage is important but not compulsory.









Different groups of Hindus will have specific places linked to their deity. However, one place is important to all: the Ganges River, which is considered a living deity.

Hindus celebrate many different festivals. However, some are celebrated by all Holi and Diwali being the most famous. Holi is a spring festival of colour and fun, whilst Diwali is an autumn festival of light.

## Week 2

### Personal Development

#### Protected Characteristics

<b>Age</b>	People cannot be treated unfairly because they are young or old. Everyone deserves respect, no matter their age	 AGE
<b>Disability</b>	People with physical or mental disabilities must be treated fairly, with <b>reasonable adjustments</b> made to support them in school, work, and life.	 DISABILITY
<b>Gender Reassignment</b>	A person is considered to be <i>transitioning</i> if they change their gender through actions like changing their name, pronouns, appearance, or having medical treatment to match their identity.	 GENDER REASSIGNMENT
<b>Marriage and Civil Partnership</b>	People must be treated equally whether they are married, in a civil partnership, or single.	 MARRIAGE AND CIVIL PARTNERSHIP
<b>Pregnancy and Maternity</b>	Pregnant people and new parents must not be treated unfairly because they are having or have had a baby.	 PREGNANCY AND MATERNITY
<b>Race</b>	No one should be treated unfairly because of their skin colour, nationality, or <b>ethnicity</b> (a person's cultural identity, which may include shared language, traditions, and history).	 RACE
<b>Religion or Belief</b>	Everyone has the right to follow their religion or beliefs, or to have no religion, without discrimination.	 RELIGION OR BELIEF
<b>Sex</b>	People must not be treated unfairly because they are biologically male or female.	 SEX

## Week 2

### Music

Remixing music is the process of changing or recreating an existing song to give it a new style, sound, or mood. A remix may include altered beats, added instruments, new vocals, or different tempos and effects.

Remixing is common in electronic dance music, pop, and hip-hop because it allows artists and producers to create fresh versions of popular tracks.

Musicians often use digital software to edit and arrange sounds creatively. Famous remix styles include dance remixes, acoustic remixes, and mashups.

For example, a slow ballad can be transformed into an upbeat club song. Remixing helps songs reach new audiences and keeps music exciting and original.



## Week 3

### English Language

To plan an effective speech, you need to plan five key parts:

**1. Invention** – you have to think about what you're going to say.

**2. Arrangement** – you put your ideas in logical and powerful order.

**3. Style** – you select your methods for impact (ethos, logos, pathos and your language techniques).

**4. Memory** – good orators do not read speeches, they memorise or use brief notes or cards.

**5. Delivery** - you perform your speech using techniques for impact (eg, Body language, tone, pace, emphasis etc.)

## Week 3

### English Literature

Napoleon – The pig who emerges as the leader of Animal Farm after the Rebellion.

Snowball – The pig who challenges Napoleon for control of Animal Farm after the Rebellion.

Boxer – The naive cart-horse whose incredible strength plays a very important role in the completion of tasks on Animal Farm.

Squealer – The pig who spreads Napoleon's propaganda amongst the other animals.

Old Major – The aged boar who has a vision of a socialist utopia, dreaming that all animals on the farm will be equal. Major dies, leaving Napoleon and Snowball to struggle for control of his legacy.

Clover – A good-hearted female cart-horse and Boxer's close friend who often suspects the pigs of violating the Seven Commandments but blames herself for misremembering them.

Benjamin – An old donkey who refuses to feel inspired by the Rebellion. He firmly believes that life will remain unpleasant whoever is in charge.

Mr Jones – The often drunk farmer who runs Manor Farm before being ousted before its rebranding to 'Animal Farm'.

**Week 3**  
**Mathematics**  
Pie charts

Useful definitions:

Key Vocabulary	Definition
Pie chart	A pie chart is a type of graph used to show <i>proportions</i> in a sample of data.
Fraction	How many parts of a whole: <ul style="list-style-type: none"><li>• The numerator says how many parts we have.</li><li>• The denominator says how many equal parts the whole is divided into.</li></ul>
Frequency	A number of times a number or item is recorded in a set of data
Proportion	A part to whole comparison. Each part of a ratio is a fraction of a whole
Sector	A portion 'slice' of a circle

**Creating a pie chart**

- To produce a pie chart, data is required. The data often comes in the form of a table.
  - To create a pie chart, the size of the angles needed must be calculated.
1. Add the total frequency in the table.
  2. Divided  $360^\circ$  by the total frequency.
  3. Multiply each frequency by this value. These are the angles for each sector.
  4. Construct a circle and draw a vertical line from the top to the centre.
  5. In a clockwise direction, use a protractor to plot each angle in turn.
  6. Label each sector or use a key to colour code each.
  7. Give your pie chart a title.

## Week 3

### Biology

Drugs are chemical substances that affect the way your body works. They alter the chemical reactions that take place inside your body. Sometimes these changes are helpful but in many cases they are harmful.

Medicinal drugs are used in medicine. They benefit your health in some way. They may be used to treat the symptoms of a condition; for example, paracetamol is taken to relieve pain. Other drugs can cure an illness. For example, antibiotics are often used to treat chest infections.

Recreational drugs are drugs that people take for enjoyment, to help them relax, or to help them to stay awake. Recreational drugs normally have no health benefits and in many cases are harmful.

# Week 3

## Physics

### Speed or average speed?

A marathon runner will take several hours to run the 26.2 miles (42.2 km) of a marathon. She does not run at exactly the same speed throughout the race.



The speed that the runner is travelling at any time during the race is the **instantaneous speed**. This is the speed that you see on the speedometer in a car.

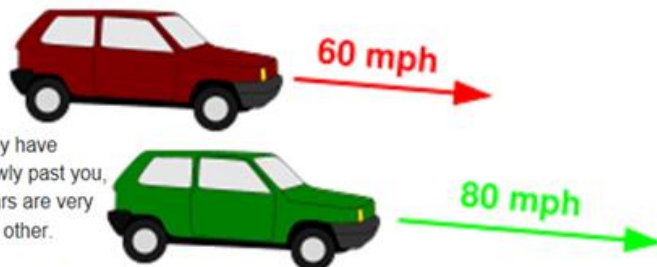
You can work out the **average speed** by dividing the *total* distance by the *total* time that it took to run the race. This average speed makes it easier to compare how fast different people, or boats, or cars, travel.

▲ A marathon runner's speed changes during a race.

	Speed (m/s)	Speed (km/h)	Speed (m.p.h.)
walking quickly	1.7	6.1	3.7
sprinting	10	36	22
typical speed limit	14	50	31
cheetah	33	119	75
aeroplane cruising speed	255	918	570
sound in air	330	1180	738
light in air	300 000 000	10 000 000 000	670 000 000

### Relative motion

If you have travelled in a car on the motorway, you may have noticed that other cars passing by appear to move slowly past you, even though you know the actual speeds of the two cars are very high. This is because of their **relative motion** to each other.

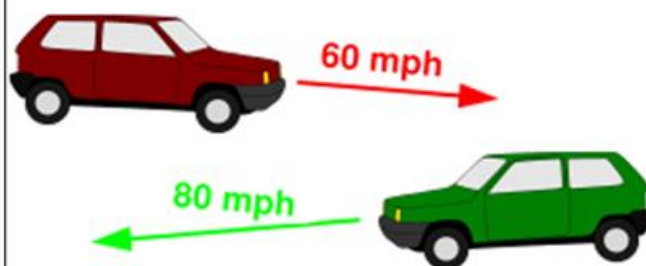


The table summarises the different situations and how you can calculate the relative speed of two objects:

Situation	Relative speed
Objects moving in the same direction towards, or away from, each other	Fastest speed – slowest speed
Objects moving in opposite directions towards, or away from, each other	Add the two speeds together

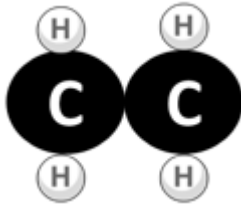
Which crash would be worse?

Explain your answer using relative speed calculations.



# Week 3

## Chemistry



Monomer



Polymer

A monomer is just one unit.

A polymer is a very long molecule. it has identical groups of molecules, repeated many times.

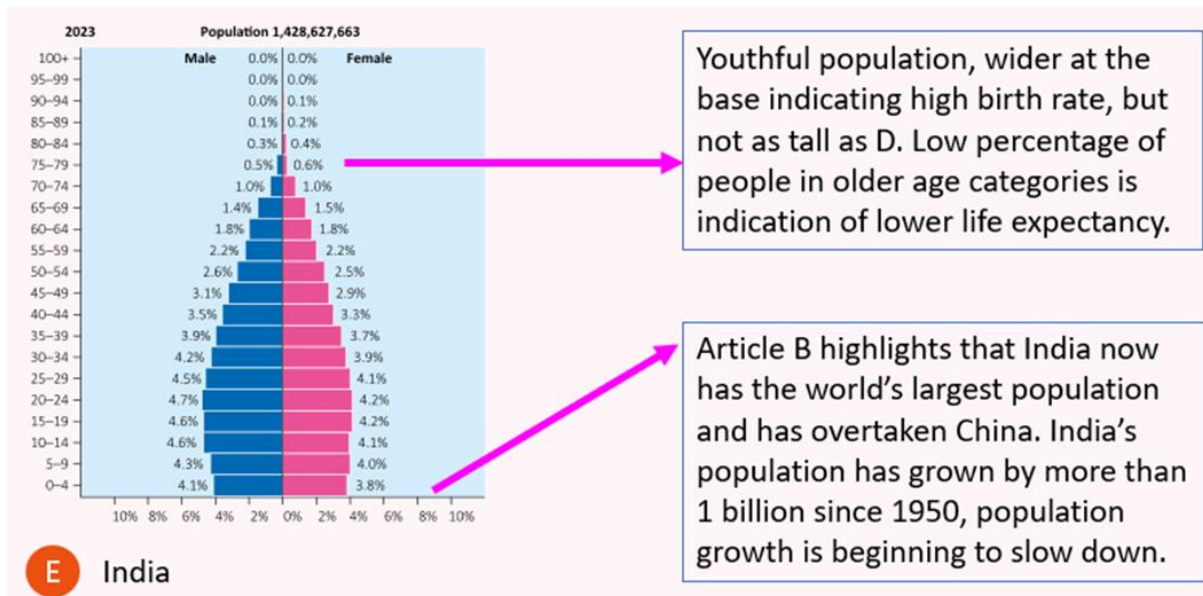
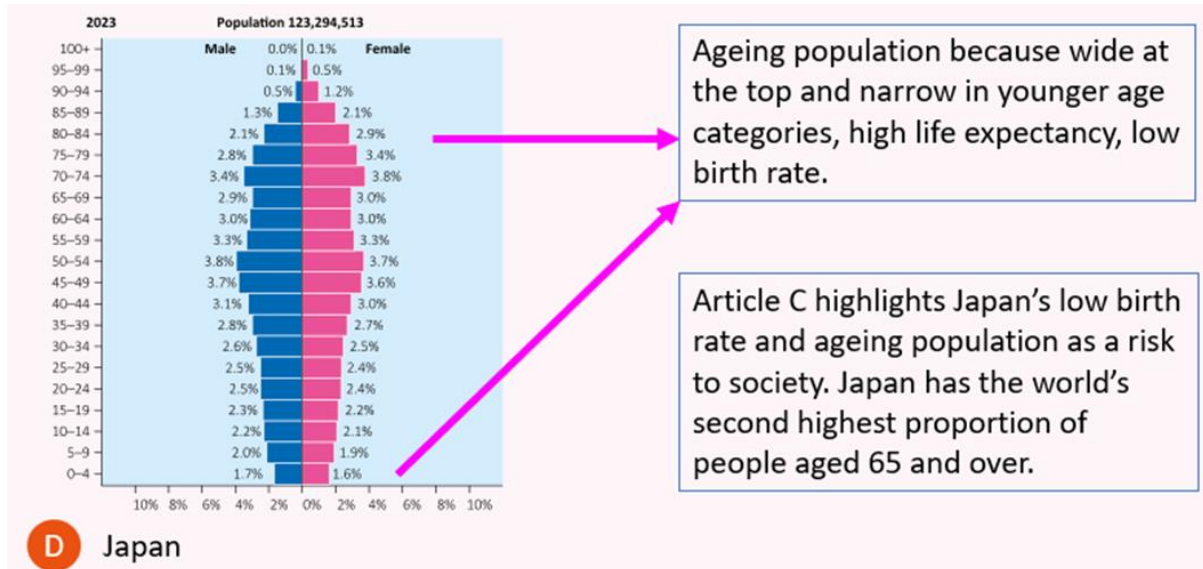
A natural polymer is something that is found in nature. For example, cotton or wool.



## Week 3

### Geography

Read through the diagram on the two population pyramids.



## Week 3

### History

#### Battle of Britain 1940

**Overview:** The Battle of Britain was the first major military campaign fought entirely by air forces, taking place between July and October 1940. The German Luftwaffe sought to gain air superiority over the Royal Air Force (RAF) as a prelude to a potential invasion of Britain.

**Significance:** The successful defence by the RAF prevented a German invasion of Britain, which would have had catastrophic consequences for the Allied forces. It also provided a significant morale boost to both the British public and the Allied cause

#### D-Day (Battle of Normandy) 1944

**Overview:** On June 6, 1944, Allied forces launched Operation Overlord, the invasion of Nazi-occupied France, known as D-Day. This massive amphibious assault involved land, sea, and air operations to establish a foothold in Normandy.

**Significance:** D-Day established a Western Front against Germany, which was crucial for the eventual liberation of Western Europe. It marked the beginning of the end for Nazi Germany as Allied forces advanced towards Berlin.

#### Battle of Stalingrad (1942-1943)

**Overview:** The Battle of Stalingrad was one of the deadliest events in WW2, fought between Nazi Germany and the Soviet Union from July 1942 to February 1943. It was marked by brutal urban warfare and significant casualties on both sides.

**Significance:** Stalingrad marked the turning point on the Eastern Front in favour of the Allies. The encirclement and eventual surrender of the German 6th Army dealt a severe blow to Hitler's plans for dominance in the East.

#### Battle of Midway (1942)

**Overview:** The Battle of Midway, fought in June 1942, was a crucial naval battle between the United States and Japan in the Pacific Theatre. The U.S. Navy, using intelligence to anticipate Japanese movements, launched a successful counterattack.

**Significance:** The victory at Midway turned the tide of the war in the Pacific, crippling the Japanese Navy by sinking four aircraft carriers. This battle significantly weakened Japan's naval capabilities and shifted the balance of power.

Taken from <https://edencamp.co.uk/blog/the-10-most-influent-battles-of-world-war-ii/>

## Week 3

### Spanish

What I do to be healthy	
Para estar sano	In order to be healthy
me relajo	I relax
duermo ocho horas	I sleep 8 hours
dejo el tabaco	I stop smoking
camino más	I walk more
como fruta y verdura	I eat fruit and vegetables
evito la comida rápida	I avoid fast food
evito los dulces	I avoid sweet things
evito las bebidas azucaradas	I avoid sugary drinks
bebo agua	I drink water
hago deportes	I do sports
hago ejercicio	I do exercise
es sano	It is healthy
es bueno para mi salud	It is good for my health

## Week 3

### RE

Hinduism began in the Indus and Saraswati Valleys in North India over 3500 years ago: it is the world's oldest religion.

Today, three countries have Hindu majority populations — India, Nepal and Mauritius. There are Hindu communities in almost every country in the world: for example, almost 2 per cent of the UK population is Hindu.

Hindus are divided into four main groups: Vaishnavites, Shaivites, Shaktivites and Smartas.

The Hindu place of Worship is called mandir. These are built to follow specific designs. The statues in the temple are believed to have the essence of a deity within them, so when a person prays they can pray directly to that deity.

Hindus worship every day. Most families have a small mandir in their home, dedicated to one deity, so that they can worship every morning. An act of worship is called a puja. For Hindus, pilgrimage is important but not compulsory.

Different groups of Hindus will have specific places linked to their deity. However, one place is important to all: the Ganges River, which is considered a living deity.

Hindus celebrate many different festivals. However, some are celebrated by all Holi and Diwali being the most famous. Holi is a spring festival of colour and fun, whilst Diwali is an autumn festival of light.

## Week 3

### Personal Development

#### British Values

Schools follow British values to promote fairness, respect, and equality. They help create a safe, inclusive environment where everyone can learn, grow, and feel valued, no matter their differences. The British Values are as follows:

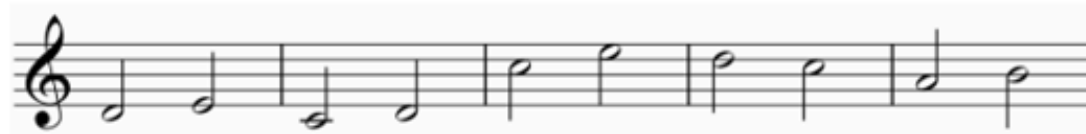
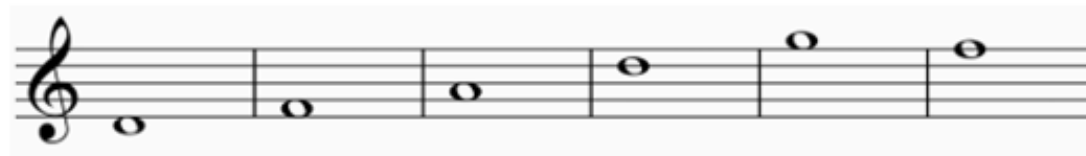
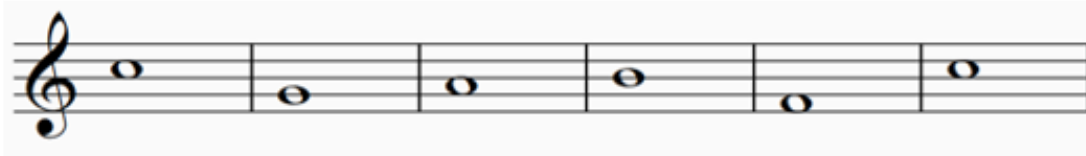
<b>Democracy</b>	Everyone has the right to have a say and make decisions, by voting or expressing their opinion.	
<b>Rule of Law</b>	Laws exist to keep people safe and ensure fairness. It's important to follow the law and respect rules, both at school and in society.	
<b>Individual Liberty</b>	Everyone has the freedom to make their own choices, whether it's about their beliefs, where they live, or what they want to do in life.	
<b>Mutual Respect</b>	We must respect each other's opinions, beliefs, and differences. Treating others with kindness and fairness is key to building a strong community.	
<b>Tolerance of Others</b>	It's important to respect and understand people's different religions, cultures, and beliefs, even if they are not the same as ours.	

Week 3

Music



D E F G A B C D E F G



# Week 4

## English Language

### **Recap: A history of rhetoric:**

**Rhetoric** comes from the Greek word for 'orator'. An orator is someone who is a powerful speaker and is able to use spoken language to influence others – like Squealer or Old Major. Whilst it initially applied only to spoken language, it has changed over time to describe how language in general (written or spoken) is used persuasively to explain a theme or idea to convince your audience to adopt your point of view.

Whilst rhetoric has remained an important part of Western culture through history, its origins can be traced back to **Ancient Greece**. It's important to remember that the use of written texts as a main form of communication is only a few hundred years old. In Ancient Greece, many people did not have access to written texts such as articles. Therefore, **political and philosophical ideas** were communicated primarily through rhetoric, the art of speaking persuasively. Rhetoric was key to public life in Ancient Greece and was considered a keyway to understand truths about the world.

In the 5<sup>th</sup> Century BC, rhetoric was considered so important to public thought and ideas that schools were set up to teach young men the art of rhetoric. The teachers at these schools were called **Sophists** and would travel from place to place to teach public speaking skills.

One of the most famous students of rhetoric is **Aristotle**, who wrote an influential text about public speaking called 'The Art of Rhetoric'. Here, he claimed that rhetoric was essential for communicating truth to others. Aristotle defined three main elements of effective rhetoric:

- **Ethos**: how a speaker influences an audience to consider her believable
- **Pathos**: the use of emotional reasons
- **Logos**: how to use language persuasively in an argument

Aristotle's definition remains one of the most important explanations of effective public speaking today in the 21<sup>st</sup> century. One of the most important features about Aristotle's definition is the need for proof and careful reasoning. Well-crafted language alone is not enough to convince an audience; it needs to be supported by clear reasons and evidence.

The ancient Greeks were not the only Classical culture for whom rhetoric was important. The ancient Romans were also keen **rhetoricians** (practisers of rhetoric). The most famous Roman rhetorician is **Cicero**, who wrote many famous works about the art of rhetoric.

Throughout history, the art of rhetoric has continued to be an important way of communicating ideas and influencing audiences. Some famous skilled rhetoricians from modern history include **Winston Churchill** as he led Britain through World War II, **Martin Luther King Jr** who fought for Civil Rights for African Americans, and **Greta Thunberg** who speaks about the importance of recognising and fighting against climate change.

## Week 4

### English Literature

**Topic sentences:** The opening/introductory sentence of your paragraph. A topic sentence should:

- Be about one thing.
- Answer the question.
- Be accurate.

**Evidence:** This should be picked out before you even begin writing and should form the basis of your entire analytical piece. The quotation should also be relevant and not shoe-horned into your response.

**Linking sentences:** Sentences which link your ideas together and allow you to go into more detail. Examples are:

- As a result...
- Furthermore, this is evident where...
- Additionally...

**Thesis:** An introductory paragraph which introduces your ideas which will be elaborated upon later in your essay.

**Conclusion:** The final paragraph of your response. This concludes everything you have analysed. It must link hand-in-hand with your thesis.

**Cohesion:** Ensure that your writing fits together seamlessly and flows effectively.

Week 4  
Mathematics  
Types of data

Useful definitions:

Key Vocabulary	Definition
Grouped data	Data that has been put into numerical intervals without any overlaps
quantitative data	data that can be written in numbers, for example, the heights of children
Discrete	numerical data that cannot be shown in decimals, for example, the number of children in a classroom
Continuous	continuous data can take any value, it must be grouped before it can be represented in a table or chart. Continuous data is grouped into <i>class intervals</i>
Intervals	The range of values allowed within that band, when grouping data.

Diagrams:

Megan owns a bakery. She counts the number of customers she has each day at lunchtime on 30 consecutive days. The results are shown here.

13	8	16	12	12	16
7	18	11	16	15	7
11	12	13	21	17	19
11	14	10	19	13	12
7	16	6	14	12	18

Number of customers	Tally	Frequency
5-10		6
11-15	/	14
16-20	/	9
21-25		1

## Week 4

### Biology

Alcohol contains the drug ethanol. When you drink alcohol, ethanol is absorbed into your bloodstream. It then travels to your brain, where it affects your nervous system. This chemical is called a depressant because it slows down your body's reactions.

Different alcoholic drinks contain different amounts of alcohol. For example, spirits such as vodka and whisky contain more alcohol than beer.

If people drink lots of alcohol regularly, they may need to drink greater amounts to cause the same effect on their body. They may become addicted. People who have an addiction to alcohol are called alcoholics.

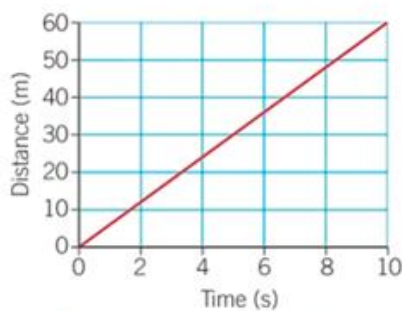
# Week 4

## Physics

### Interpreting distance-time graphs

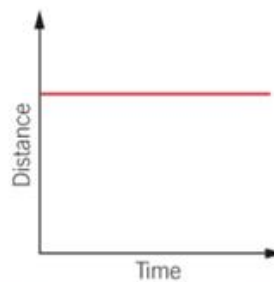
#### What does the graph tell us?

This is a very simple distance-time graph. The object moves the same distance each second.

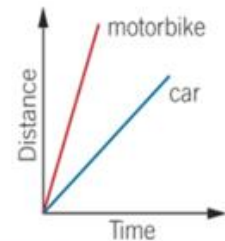


▲ A distance-time graph for a constant speed.

What happens if you stay still?  
The line on the distance-time graph is horizontal.



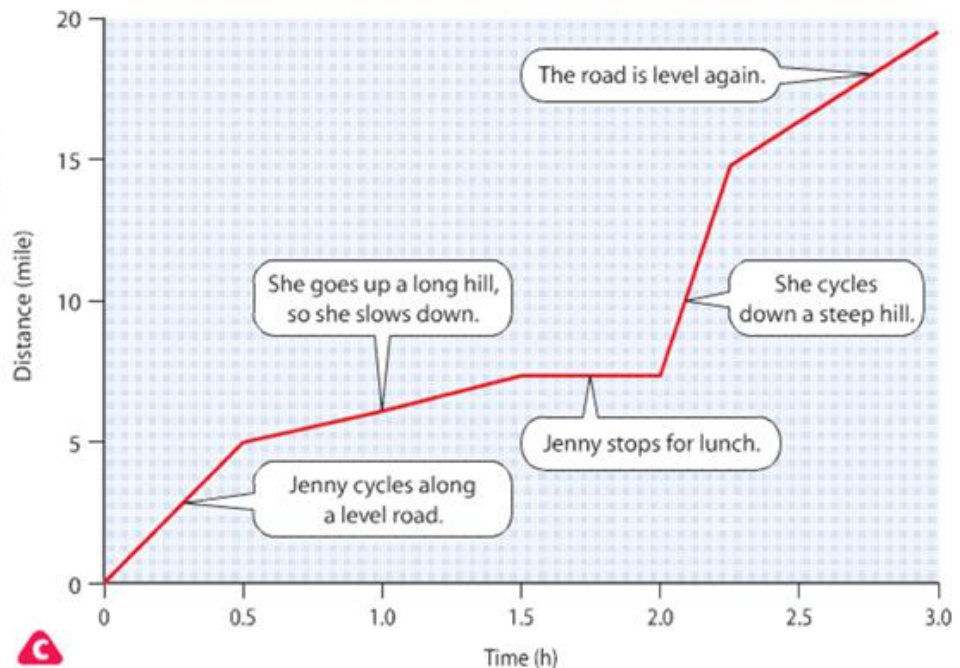
▲ A distance-time graph for a stationary object.



▲ A distance-time graph for two different speeds.

### Distance-time graphs

- A distance time graph shows how fast Jenny travelled during a journey.



## Week 4

# Chemistry

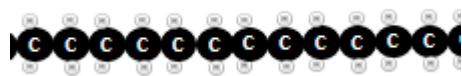
Synthetic polymers do not occur naturally. They are made in a lab using chemical reactions.

The chemicals come from crude oil. A polymer is a substance with long molecules. A molecule has identical groups of molecules, repeated many times.

To name the polymer, add 'poly' to the monomer name. for example, ethene becomes polyethene.



ethene



polyethene

Chloroethene becomes polychloroethene.



chloroethene

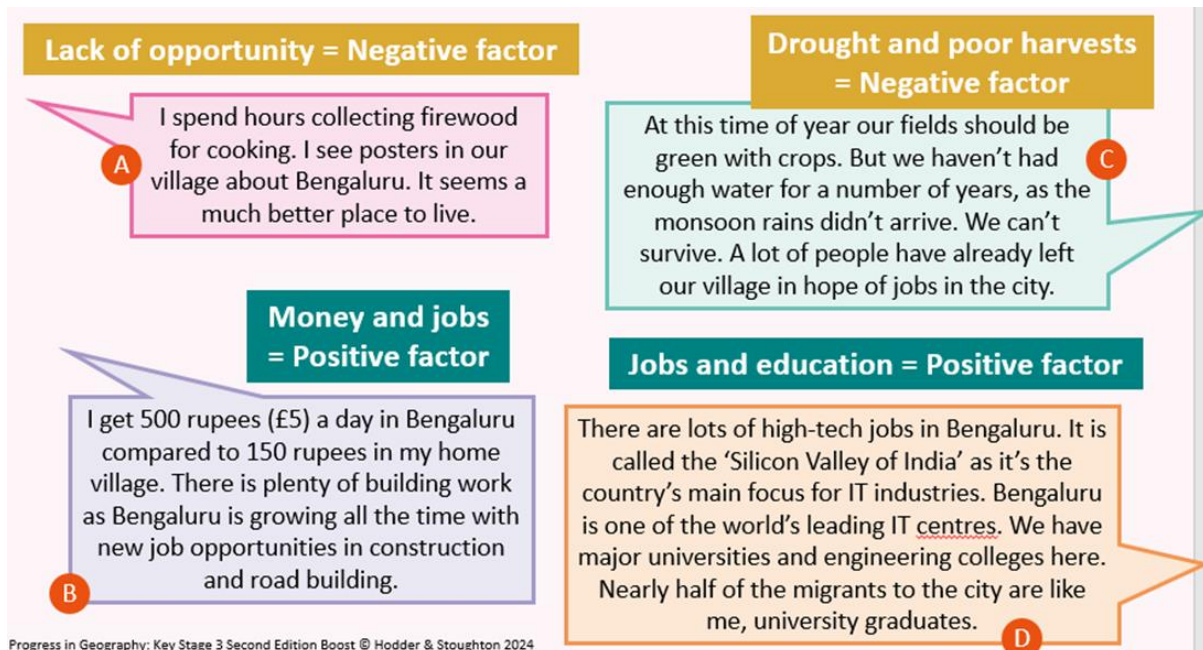
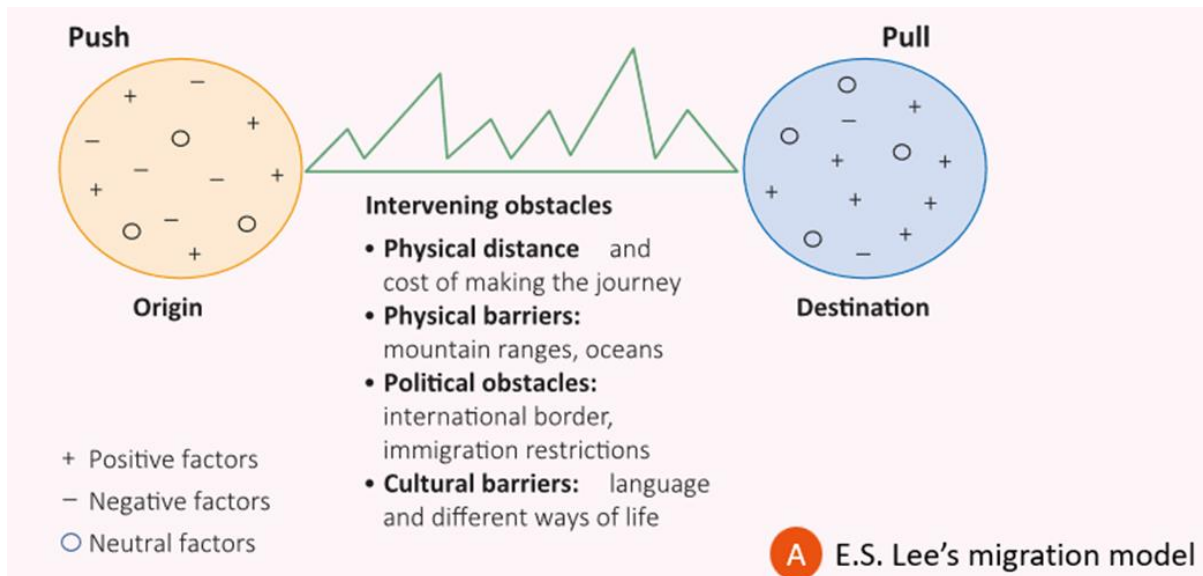


polychloroethene

## Week 4

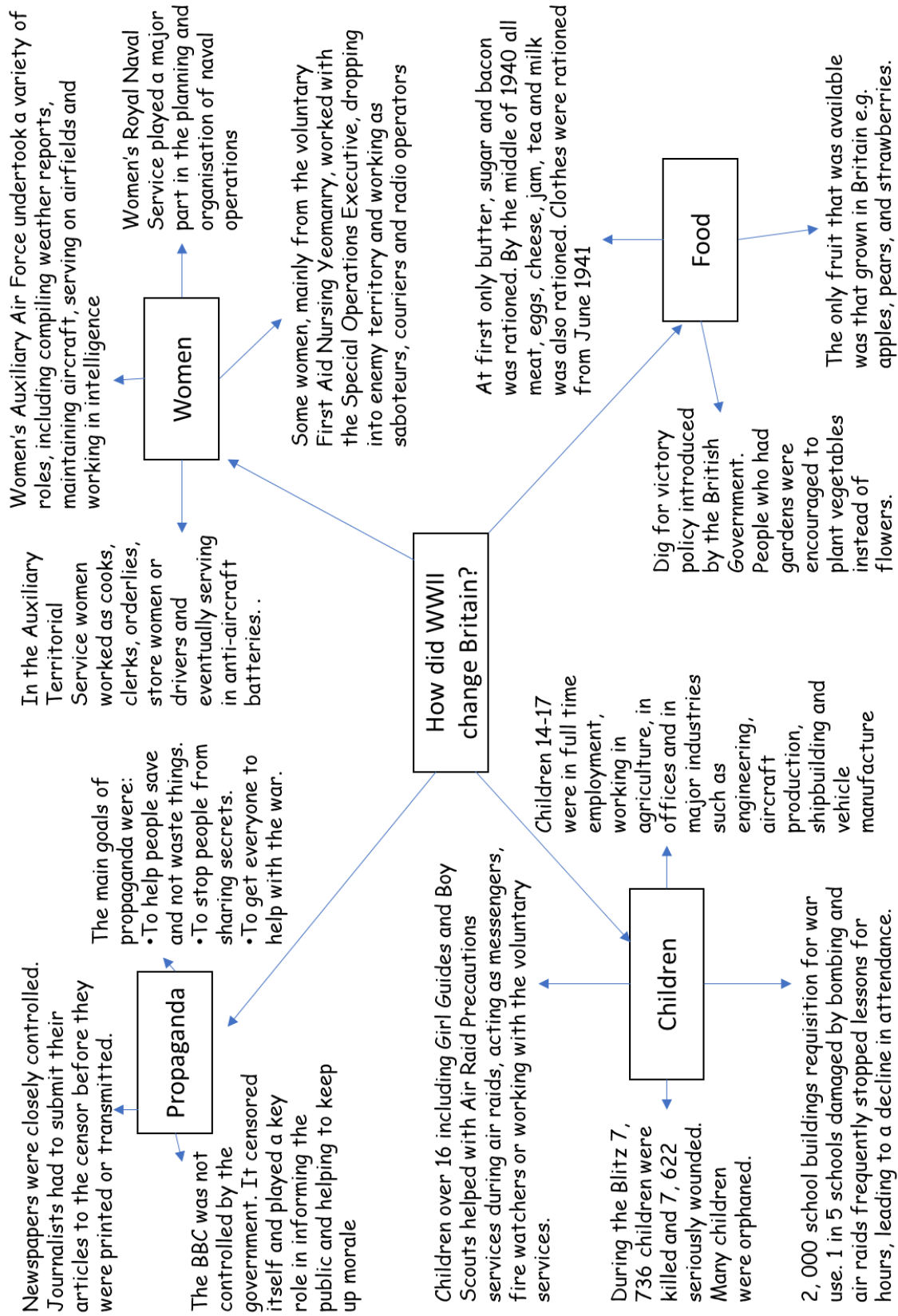
### Geography

Read through the diagrams showing the push and pull factors associated with migration.



# Week 4

## History



## Week 4

### Spanish

Body parts	
me duele	.....hurts
tengo dolor de	I have a.....ache
la cabeza	head
la garganta	throat
los ojos	eyes
los oídos	ears
la nariz	nose
la boca	mouth
la cara	face
los dientes	teeth
la rodilla	knee
la mano	hand
la pierna	leg
el pie	foot
el tobillo	ankle
el dedo	finger

## Week 4

### Religious Education

Buddhism is the fourth largest religion in the world, with about 500 million followers — about 6.5 per cent of the world's population.

There are two broad groups in Buddhism: the earlier Theravada school, and the Mahayana school which emerged around a century later.

The Buddha was a man who lived about 2500 years ago and taught about life. He taught about the reasons why things happen, why some of the things we do make us unhappy, what happiness really is and how to achieve it. He said that anyone can overcome their sufferings and be perfectly happy. This is called enlightenment. A Buddha is an enlightened being.

Daily life for a committed Buddhist consists of the Middle Way. The Middle Way has three parts to it: wisdom, morality and mental training.

Buddhist temples are known as viharas after the camps that the and his followers stayed in on their travels.









There are four places associated with the Buddha that some visit on pilgrimages: Lumbini, where the Buddha was born, Bodhgaya, where he became enlightened, Sarnath, where started teaching the Dharma, and Kusinagar, where he died.

There are very few festivals that are celebrated by all Buddhist throughout the world. Wesak is the most widely observed. It marks the Buddha's enlightenment and for Theravada it also marks his birth and death.

## Week 4

### Personal Development

#### Protected Characteristics

<b>Age</b>	People cannot be treated unfairly because they are young or old. Everyone deserves respect, no matter their age	 AGE
<b>Disability</b>	People with physical or mental disabilities must be treated fairly, with <b>reasonable adjustments</b> made to support them in school, work, and life.	 DISABILITY
<b>Gender Reassignment</b>	A person is considered to be <i>transitioning</i> if they change their gender through actions like changing their name, pronouns, appearance, or having medical treatment to match their identity.	 GENDER REASSIGNMENT
<b>Marriage and Civil Partnership</b>	People must be treated equally whether they are married, in a civil partnership, or single.	 MARRIAGE AND CIVIL PARTNERSHIP
<b>Pregnancy and Maternity</b>	Pregnant people and new parents must not be treated unfairly because they are having or have had a baby.	 PREGNANCY AND MATERNITY
<b>Race</b>	No one should be treated unfairly because of their skin colour, nationality, or <b>ethnicity</b> (a person's cultural identity, which may include shared language, traditions, and history).	 RACE
<b>Religion or Belief</b>	Everyone has the right to follow their religion or beliefs, or to have no religion, without discrimination.	 RELIGION OR BELIEF
<b>Sex</b>	People must not be treated unfairly because they are biologically male or female.	 SEX

## Week 4

### Music

In music, a genre is a category or style of music that shares similar characteristics, instruments, rhythms, and themes. Genres help listeners identify the sound and mood of different types of music.

Common music genres include pop, rock, jazz, classical, hip-hop, country, and electronic dance music. Each genre has its own unique features.

For example, classical music often uses orchestras and complex compositions, while hip-hop focuses on rhythm, rapping, and strong beats. Some songs combine elements from several genres, creating new styles such as pop-rock or jazz fusion.

Understanding genre helps musicians and audiences describe, organise, and appreciate different forms of music from around the world.





## Week 5

### English Literature

#### **How did Stalin build a cult of personality?**

A cult of personality is when a leader uses propaganda to make people admire them, praise them, and see them as a perfect hero who can do no wrong.

After his 50th birthday in 1929, Joseph Stalin developed a powerful cult of personality in the Soviet Union. Newspapers, posters, films and speeches all presented Stalin as an all-powerful, all-knowing, and caring leader. From 1936, Soviet journalists even called him “the Father of Nations”.

#### **Stalin’s image:**

The Soviet press praised Stalin every day, using words like “Great”, “Beloved”, “Bold”, “Wise”, “Inspirer” and “Genius”. Posters and paintings showed him as a strong, fatherly figure, with the Soviet people as his “children”.

Images often showed Stalin smiling kindly at children. From 1935, the slogan “Thank you, Comrade Stalin, for a happy childhood!” appeared outside nurseries and schools, and children chanted it at festivals. This helped create the idea that Stalin personally cared for every child in the country.

Stalin also became the subject of poetry, music, books and films that praised him. One famous example is A. V. Avidenko’s *Hymn to Stalin*:

*“Thank you, Stalin. Thank you because I am joyful.*

*Thank you because I am well.*

*Everything belongs to thee, chief of our great country.*

*And when the woman I love gives birth to a child,*

*the first word it shall utter will be: Stalin.”*

Large portraits and statues of Stalin appeared in public buildings, streets and workplaces. They often showed him as tall, strong and heroic, even though photographs suggest he was only around 5'5" or 5'6" tall

## Week 5

### Mathematics

#### Graphs/charts

Would you use a pie chart, line graph, bar chart or scatter graph to represent the information shown on each card.

Proportion of ingredients used  
in a cake

Pie chart

Profits made by company over  
the last 5 years

Line graph

The heights and weights of 10  
people

Scatter graph

Number of TVs per household  
in a class

Bar chart

25 batteries were tested to see how long they lasted. The results were:

23 15 5 9 17  
18 27 19 12 18  
15 20 27 22 13  
23 12 18 11 26  
14 23 22 19 16

Duration (hours)	Tally	Frequency
$5 \leq t < 10$		2
$10 \leq t < 15$		5
$15 \leq t < 20$		9
$20 \leq t < 25$		6
$25 \leq t < 30$		3

Which class does the battery that lasted 15 hours belong to?  $15 \leq t < 20$

Complete the table to show the number of batteries in each class.

## Biology

Nicotine – an addictive drug that is a stimulant

Tar - a black, sticky chemical that causes cancer (carcinogen).

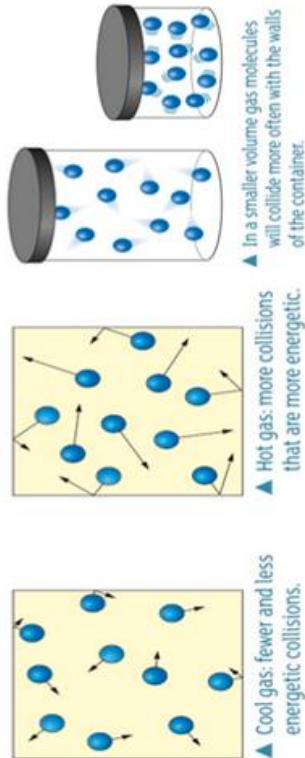
Carbon monoxide – a toxic gas which prevents red blood cells from carrying oxygen

Particulates – the dust particles in tobacco smoke which damage the cilia of epithelial cells

# Week 5

## Physics

### What is gas pressure?



### Liquid pressure

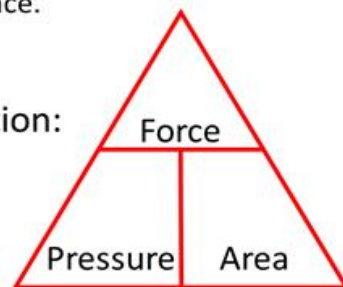
- When you swim underwater, the water molecules are pushing on each other and other surfaces, such as you.
- **Liquid pressure** acts in all directions.
- If you put water in a syringe, cover the end and try to squeeze the liquid it will be impossible.
- Liquids are **Incompressible**. They can't be compressed.

### What is pressure on solids?

- When you stand on a surface you exert a force on it because of your weight.
- Because your weight is spread out over the area of your feet, you exert a **Pressure** on the ground.
- Pressure is a measure of how much force is applied over a certain area.
- The pressure acts in a direction that is 90°, or normal, to the surface.

- You calculate pressure using the equation:

$$\text{Pressure (N/m}^2\text{)} = \frac{\text{Force (N)}}{\text{Area (m}^2\text{)}}$$



- You measure force in Newtons (N) and area in metres squared (m<sup>2</sup>).
- Pressure is measured in **Newtons per metre squared**
- You can also measure area in centimetres squared (cm<sup>2</sup>). Just make sure you state the pressure in Newtons per centimetre squared (N/cm<sup>2</sup>)

## Week 5

### Chemistry

A composite is a mixture of materials. Each material has different properties. The composite material has the properties that are a combination of the properties of the materials it is made up of.

Composite materials can be used to improve properties of a material. They can be tailored to give up more desirable properties.

An example of a composite material is reinforced concrete.

When you walk on concrete the top part is in **compression (getting crushed)** and the bottom part is being **stretched /pulled apart** (tension).

Concrete isn't totally solid it has tiny holes

To improve concrete **steel/iron** was placed in it.

The name given to this composite material is **reinforced** concrete.

The iron/steel unlike concrete can withstand **tension** forces.

Cracking still occurs but **stops half way up**

## Week 5

### Geography

Read through the information on the reasons for China's economic growth.

#### **Shipping and trade**

China has invested in shipping, with the world's second largest fleet of commercial vessels. It also produces 96 per cent of the world's shipping containers. China has developed some of the world's largest and busiest ports.

**Labour supply**

**Large percentage of female workers**

**Low wages**

**Natural resources**

**Location**

**Poverty reduction**

**Investment in infrastructure**

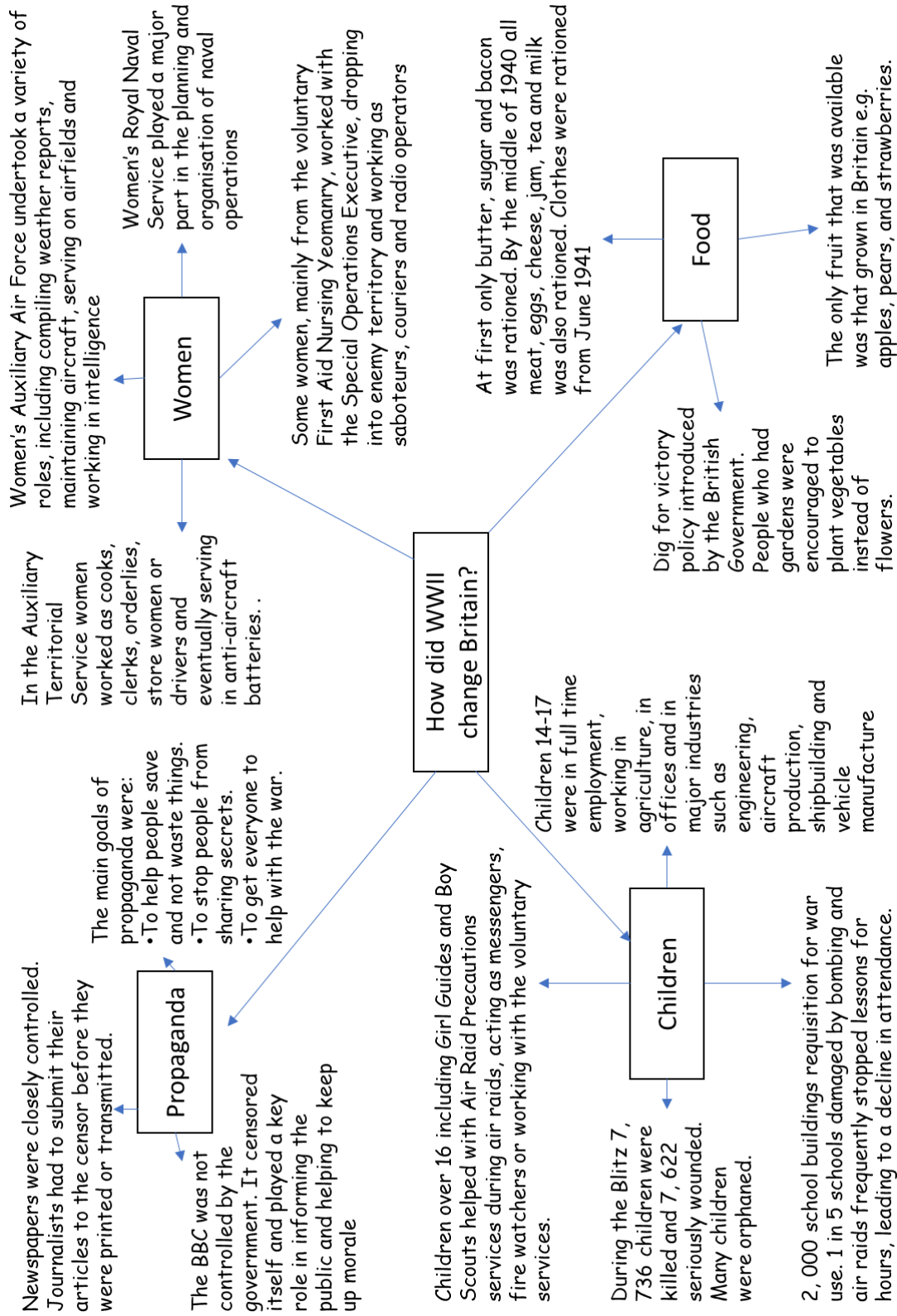
**Energy supply**

**Political system and strong leadership**

**Shipping and trade**

# Week 5

## History



## Week 5

### Spanish

What is wrong	
me duelen los dientes	.....hurts
me duele la garganta	I have a sore throat
tengo dolor de cabeza	I have a headache
tengo una insolación	I have a sunstroke
tengo un resfriado	I have a cold
tengo fiebre	I have a fever
me rompí la rodilla	knee
me rompí mano	hand
me rompí el pie	foot
me torcí tobillo	ankle
me corté el dedo	finger

## Week 5

### Religious Education

Buddhism is the fourth largest religion in the world, with about 500 million followers — about 6.5 per cent of the world's population.

There are two broad groups in Buddhism: the earlier Theravada school, and the Mahayana school which emerged around a century later.

The Buddha was a man who lived about 2500 years ago and taught about life. He taught about the reasons why things happen, why some of the things we do make us unhappy, what happiness really is and how to achieve it. He said that anyone can overcome their sufferings and be perfectly happy. This is called enlightenment. A Buddha is an enlightened being.

Daily life for a committed Buddhist consists of the Middle Way. The Middle Way has three parts to it: wisdom, morality and mental training.

Buddhist temples are known as viharas after the camps that the and his followers stayed in on their travels.

There are four places associated with the Buddha that some visit on pilgrimages: Lumbini, where the Buddha was born, Bodhgaya, where he became enlightened, Sarnath, where started teaching the Dharma, and Kusinagar, where he died.

There are very few festivals that are celebrated by all Buddhist throughout the world. Wesak is the most widely observed. It marks the Buddha's enlightenment and for Theravada it also marks his birth and death.

## Week 5

### Personal Development

#### British Values

Schools follow British values to promote fairness, respect, and equality. They help create a safe, inclusive environment where everyone can learn, grow, and feel valued, no matter their differences. The British Values are as follows:

<b>Democracy</b>	Everyone has the right to have a say and make decisions, by voting or expressing their opinion.	
<b>Rule of Law</b>	Laws exist to keep people safe and ensure fairness. It's important to follow the law and respect rules, both at school and in society.	
<b>Individual Liberty</b>	Everyone has the freedom to make their own choices, whether it's about their beliefs, where they live, or what they want to do in life.	
<b>Mutual Respect</b>	We must respect each other's opinions, beliefs, and differences. Treating others with kindness and fairness is key to building a strong community.	
<b>Tolerance of Others</b>	It's important to respect and understand people's different religions, cultures, and beliefs, even if they are not the same as ours.	

## Week 5

### Music

In music, dynamics describe how loud or soft music should be played or sung. They help create emotion, contrast, and expression within a piece.

Composers use Italian terms and symbols to show dynamic changes.

For example, *piano* (*p*) means soft, while *forte* (*f*) means loud. *Mezzo piano* (*mp*) means moderately soft, and *mezzo forte* (*mf*) means moderately loud. *Crescendo* tells musicians to gradually become louder, while *decrescendo* or *diminuendo* means to gradually become softer. Very loud music is marked *fortissimo* (*ff*), and very soft music is *pianissimo* (*pp*). Dynamics make music more expressive and engaging for listeners.



# Week 6

## English Language

### Vocabulary from Rhetoric:

**Indispensable:** Something which is essential and cannot be removed or discarded.

**Prosperity:** The state of flourishing or thriving financial success.

**Obsolete:** Something which is no longer relevant; often an outdated technology, idea or concept.

**Envision:** To be able to imagine something happening or occurring.

**Periodic:** Something which occurs at regular intervals.

**Benevolent:** Possessing good, moral or pure intentions.

**Diverse:** A society or group made up of many distinct elements.

**Nook:** A small, quiet or sheltered spot – often a corner.

## Week 6

### English Literature

**Totalitarian:** A system of extreme government where a ruling party or dictator attempts to assert absolute control over both public and private life.

**Cult of personality:** A propaganda-driven phenomenon where a leader is idealised, worshipped and portrayed as god-like.

**Five Year Plan:** Stalin's series of centralised economic programmes launched to rapidly transform the Soviet Union into an industrial and military superpower from a previously peasant society.

**Gulag:** A vast system of Soviet forced-labour camps and prisons which operated in their peak under Stalin between the 1930s and 1950s. The system imprisoned an estimated 18 to 20 million people.

**Propaganda:** Biased or misleading information designed to intentionally persuade people into believing a certain agenda.

**Exploitation:** The unfair or manipulative treatment of somebody for personal or financial gain.

## Week 6

### Mathematics

#### Mean, median and mode

Average	How to find the average
Mean	The mean uses all the values in the data. To calculate the mean: <ol style="list-style-type: none"><li>1. Add all the numbers up</li><li>2. Divide by how many values there are</li></ol>
Median	The median is the middle value in the sorted set of data. To calculate the median: <ol style="list-style-type: none"><li>1. List the values in order from smallest to largest</li><li>2. Cross values off from each end to identify the middle value</li></ol>
Mode	The mode is the most common value that appears in the data.  The mode is the only average where there can be more than one. If there are two modes we say it is <b>bimodal</b> ; if there are more than two modes it is <b>multimodal</b> .

#### Questions:

Here are the weekly wages of the employees of a small firm.

£440      £440      £440      £440      £440  
£460      £460      £500      £550      £900

Find the mean, median and mode of the weekly wages.

Mean: 507      Median: £450      Mode: £440

Week 6

Biology

- Cancer e.g. throat, lungs or mouth cancer
- Emphysema- lung condition, causes shortness of breath
- Heart disease
- Asthma
- Bronchitis- lungs become inflamed and irritated
- Heart failure
- Blockage in the arteries

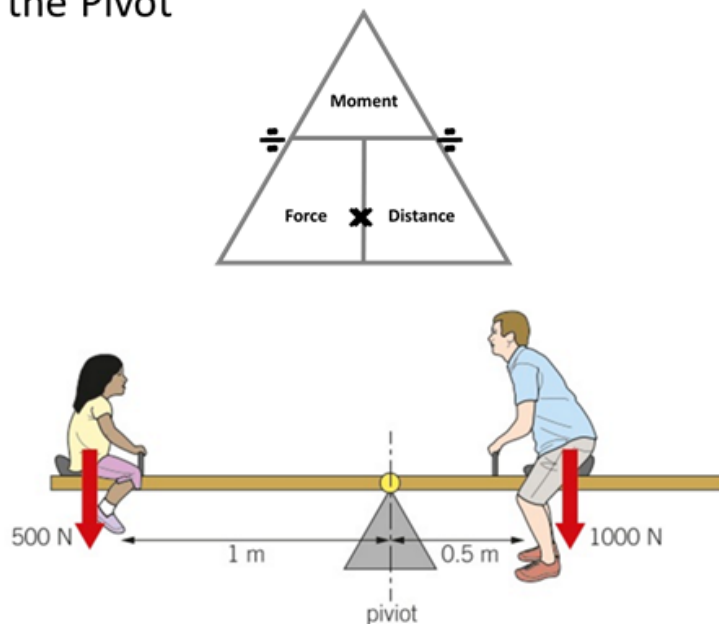
Week 6

Physics

## A force that turns - Moment

**MOMENT (Nm) = FORCE (N) X PERPENDICULAR  
DISTANCE  
FROM THE PIVOT(m)**

- When you open a door you are using a turning force.
- A turning force acts a certain distance from a **PIVOT**.
- This turning effect of a force is called a **MOMENT**. It depends on the force being applied and how far it is from the Pivot



Using Moment (Nm) = Force (N) x Distance (m), calculate the following:

1. The anticlockwise moment caused by Holly
2. The clockwise moment caused by Dave
3. Is the seesaw in equilibrium?

Week 6  
Chemistry

Displacement reactions revision

## Will displacement/a reaction occur (Yes or no)?

1. Carbon + Magnesium oxide
2. Carbon + Silver oxide
3. carbon + iron oxide
4. Carbon + Copper oxide
5. Carbon + Aluminium oxide

No ✓  
Yes ✓  
yes ✓  
Yes ✓  
No ✓



potassium  
sodium  
calcium  
magnesium  
aluminium  
**(carbon)**  
zinc  
iron  
lead  
(hydrogen)  
copper  
silver  
gold  
platinum

The more reactive metal will displace (swap with) the less reactive metal.

Carbon and hydrogen are in there, in brackets, as they are non metals but can be used for displacement reactions as well. Carbon is used to extract copper from its oxide ore.

Carbon + copper oxide → copper + carbon dioxide

Carbon was more reactive than copper, so was able to displace the copper out of the oxide. This forms copper (extracted) and carbon dioxide gas.

## Week 6

### Geography

Read through the information on the impacts of China's economic growth

In 1995 the USA's share of global trade in hi-tech goods was nearly 25 per cent, while China's was 3 per cent. By 2005, the USA share had fallen to 15 per cent and China's had risen to 15 per cent. By 2050 the economy of China could be almost 50 per cent bigger than the USA's. Asia is now responsible for one third of global trade, up from 25 per cent ten years before.

#### **What is a port?**

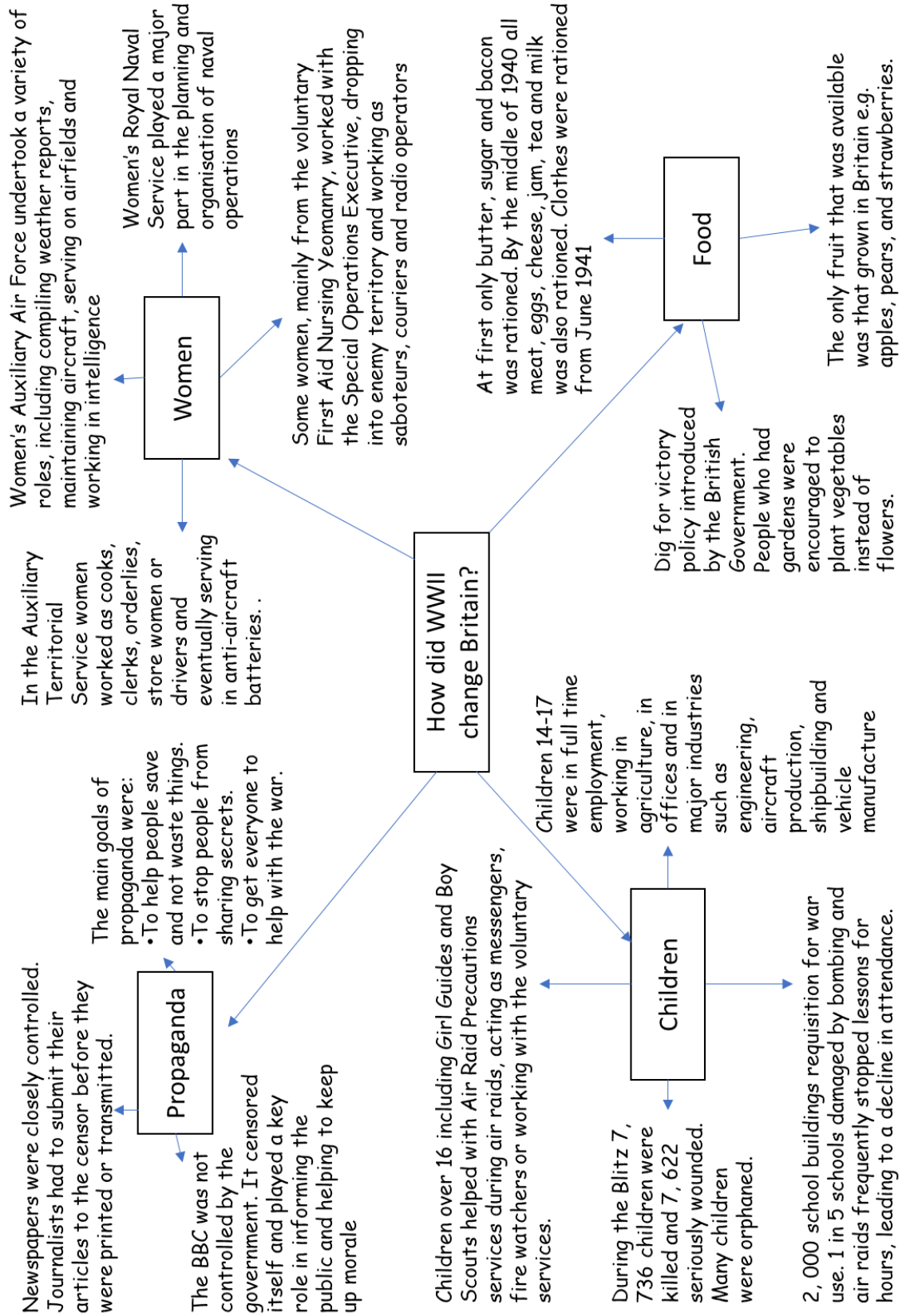
A port is a location on the coast that provides facilities for ships to load and unload their cargo. It is the gateway for a country's imports and exports.

#### **What are the features of a port?**

- A large area of sheltered water, protected from storms, where ships can load and unload their cargo.
- Plenty of flat land for storing and moving goods.
- Good transport links to transfer imports to consumers and raw materials to industries, and bring goods for export to the port.
- A nearby labour force to provide the services to load and unload goods and redistribute them.

# Week 6

## History



## Week 6

### Spanish

How to be healthy	
Para estar sano	In order to be healthy
Se debe	You must
No se debe	You must not
relajarse	relax
dormir ocho horas	sleep 8 hours
dejar el tabaco	stop smoking
caminar más	walk more
comer fruta y verdura	eat fruit and vegetables
evitar la comida rápida	avoid fast food
evitar los dulces	avoid sweet things
evitar las bebidas azucaradas	avoid sugary drinks
beber agua	drink water
hacer deportes	do sports
hacer ejercicio	do exercise

## Week 6

### Religious Education

Buddhism is the fourth largest religion in the world, with about 500 million followers — about 6.5 per cent of the world's population.

There are two broad groups in Buddhism: the earlier Theravada school, and the Mahayana school which emerged around a century later.

The Buddha was a man who lived about 2500 years ago and taught about life. He taught about the reasons why things happen, why some of the things we do make us unhappy, what happiness really is and how to achieve it. He said that anyone can overcome their sufferings and be perfectly happy. This is called enlightenment. A Buddha is an enlightened being.

Daily life for a committed Buddhist consists of the Middle Way. The Middle Way has three parts to it: wisdom, morality and mental training.

Buddhist temples are known as viharas after the camps that the and his followers stayed in on their travels.









There are four places associated with the Buddha that some visit on pilgrimages: Lumbini, where the Buddha was born, Bodhgaya, where he became enlightened, Sarnath, where started teaching the Dharma, and Kusinagar, where he died.

There are very few festivals that are celebrated by all Buddhist throughout the world. Wesak is the most widely observed. It marks the Buddha's enlightenment and for Theravada it also marks his birth and death.

## Week 6

### Personal Development

#### Protected Characteristics

Age	People cannot be treated unfairly because they are young or old. Everyone deserves respect, no matter their age	 AGE
Disability	People with physical or mental disabilities must be treated fairly, with <b>reasonable adjustments</b> made to support them in school, work, and life.	 DISABILITY
Gender Reassignment	A person is considered to be <i>transitioning</i> if they change their gender through actions like changing their name, pronouns, appearance, or having medical treatment to match their identity.	 GENDER REASSIGNMENT
Marriage and Civil Partnership	People must be treated equally whether they are married, in a civil partnership, or single.	 MARRIAGE AND CIVIL PARTNERSHIP
Pregnancy and Maternity	Pregnant people and new parents must not be treated unfairly because they are having or have had a baby.	 PREGNANCY AND MATERNITY
Race	No one should be treated unfairly because of their skin colour, nationality, or <b>ethnicity</b> (a person's cultural identity, which may include shared language, traditions, and history).	 RACE
Religion or Belief	Everyone has the right to follow their religion or beliefs, or to have no religion, without discrimination.	 RELIGION OR BELIEF
Sex	People must not be treated unfairly because they are biologically male or female.	 SEX











## Week 6

### Music

In music, rhythm is the pattern of sounds and silences arranged over time. Rhythm gives music movement, structure, and energy, helping musicians stay together while performing.

It is created using different note values, which show how long a note should last. Common note values include the semibreve (whole note), minim (half note), crotchet (quarter note), quaver (eighth note), and semiquaver (sixteenth note).

The beat is the steady pulse of the music, while the tempo controls how fast the rhythm moves. Rhythms can be simple or complex, and different musical styles use rhythm in unique ways, such as swinging rhythms in jazz or strong beats in rock music.

ITEM	NOTE	REST	VALUE (number of beats)
Whole note/rest			4
Half note/rest			2
Quarter note/rest			1
Eighth note/rest			1/2
Sixteenth note/rest			1/4